

# **HISTORIC AMERICAN BUILDINGS SURVEY**

## **INDEX TO PHOTOGRAPHS**

Idaho National Engineering Laboratory  
Arco Naval Proving Ground  
(Idaho National Laboratory)  
Scoville Vicinity  
Butte County  
Idaho

**HALS No. ID-1**

Darren Clark, Photographer, August 2014

- |         |  |
|---------|--|
| ID-1-1  | MARINE BARRACKS (CFA 606), CONTEXT VIEW LOOKING SOUTH/SOUTHWEST.   |
| ID-1-2  | MARINE BARRACKS (CFA 606), NORTHEAST (FRONT) ELEVATION, VIEW LOOKING SOUTHWEST.  |
| ID-1-3  | MARINE BARRACKS (CFA 606), OBLIQUE FROM NORTH CORNER, VIEW LOOKING SOUTH.  |
| ID-1-4  | MARINE BARRACKS (CFA 606), NORTHWEST (SIDE) ELEVATION, VIEW LOOKING SOUTHEAST.   |
| ID-1-5  | MARINE BARRACKS (CFA 606), OBLIQUE FROM WEST CORNER, VIEW LOOKING EAST.  |
| ID-1-6  | MARINE BARRACKS (CFA 606), SOUTHWEST (REAR) ELEVATION, VIEW LOOKING NORTHEAST.   |
| ID-1-7  | MARINE BARRACKS (CFA 606), OBLIQUE FROM SOUTH CORNER, VIEW LOOKING NORTH.  |
| ID-1-8  | MARINE BARRACKS (CFA 606), SOUTHEAST (SIDE) ELEVATION, VIEW LOOKING NORTHWEST.   |
| ID-1-9  | MARINE BARRACKS (CFA 606), OBLIQUE FROM EAST CORNER, VIEW LOOKING WEST.  |
| ID-1-10 | MARINE BARRACKS (CFA 606), DETAIL OF NORTHEAST (FRONT) ELEVATION - FRONT ENTRY, DOOR AND PORCH - VIEW LOOKING SOUTHWEST. |

Idaho National Engineering Laboratory,  
Arco Naval Proving Ground  
HALS No. ID-1  
INDEX TO PHOTOGRAPHS  
(Page 2)

ID-1-11	MARINE BARRACKS (CFA 606), DETAIL OF NORTHEAST (FRONT) ELEVATION - TYPICAL GROUND FLOOR WINDOW - VIEW LOOKING SOUTHWEST.
ID-1-12	COMMANDING OFFICER'S QUARTERS (CFA 607) AND GARAGE (CFA 632), CONTEXT VIEW FROM LAWN ACROSS KANSAS ST. TO THE NORTH; VIEW LOOKING SOUTHEAST
ID-1-13	COMMANDING OFFICER'S QUARTERS (CFA 607) AND GARAGE (CFA 632), CONTEXT VIEW OF KANSAS ST., BUILDINGS, LAWN, AND TREES; VIEW LOOKING SOUTH/SOUTHWEST.
ID-1-14	COMMANDING OFFICER'S QUARTERS (CFA 607), NORTHWEST (FRONT) ELEVATION; VIEW LOOKING SOUTHEAST.
ID-1-15	COMMANDING OFFICER'S QUARTERS (CFA 607), OBLIQUE FROM WEST CORNER; VIEW LOOKING EAST.
ID-1-16	COMMANDING OFFICER'S QUARTERS (CFA 607), SOUTHWEST (SIDE) ELEVATION; VIEW LOOKING NORTHEAST.
ID-1-17	COMMANDING OFFICER'S QUARTERS (CFA 607), OBLIQUE FROM SOUTH CORNER; VIEW LOOKING NORTH.
ID-1-18	COMMANDING OFFICER'S QUARTERS (CFA 607), SOUTHEAST (REAR) ELEVATION; VIEW LOOKING NORTHWEST.
ID-1-19	COMMANDING OFFICER'S QUARTERS (CFA 607), OBLIQUE FROM EAST CORNER; VIEW LOOKING WEST.
ID-1-20	COMMANDING OFFICER'S QUARTERS (CFA 607), NORTHEAST (SIDE) ELEVATION, GARAGE (CFA 632) IN FOREGROUND; VIEW LOOKING SOUTHWEST.
ID-1-21	COMMANDING OFFICER'S QUARTERS (CFA 607), OBLIQUE FROM NORTH CORNER; VIEW LOOKING SOUTH.
ID-1-22	COMMANDING OFFICER'S QUARTERS (CFA 607), DETAIL OF NORTHWEST (FRONT) ELEVATION - FRONT DOOR - VIEW LOOKING SOUTHEAST



Idaho National Engineering Laboratory,  
Arco Naval Proving Ground  
HALS No. ID-1  
INDEX TO PHOTOGRAPHS  
(Page 3)

ID-1-23	COMMANDING OFFICER'S QUARTERS (CFA 607), DETAIL OF NORTHEAST (SIDE) ELEVATION - SIDE DOOR - VIEW LOOKING SOUTHWEST.
ID-1-24	COMMANDING OFFICER'S QUARTERS (CFA 607), DETAIL OF SOUTHEAST (REAR) ELEVATION - TYPICAL GROUND FLOOR WINDOW - VIEW LOOKING NORTHWEST.
ID-1-25	COMMANDING OFFICER'S QUARTERS (CFA 607), DETAIL OF SOUTHWEST (SIDE) ELEVATION - TYPICAL BASEMENT WINDOW - VIEW LOOKING NORTHEAST.
ID-1-26	COMMANDING OFFICER'S QUARTERS, GARAGE (CFA 632), NORTHWEST (FRONT) ELEVATION, VIEW LOOKING SOUTHEAST.
ID-1-27	COMMANDING OFFICER'S QUARTERS, GARAGE (CFA 632), OBLIQUE FROM WEST CORNER, VIEW LOOKING EAST.
ID-1-28	COMMANDING OFFICER'S QUARTERS, GARAGE (CFA 632), SOUTHWEST (SIDE) ELEVATION, VIEW LOOKING NORTHEAST.
ID-1-29	COMMANDING OFFICER'S QUARTERS, GARAGE (CFA 632), OBLIQUE FROM SOUTH CORNER, VIEW LOOKING NORTH.
ID-1-30	COMMANDING OFFICER'S QUARTERS, GARAGE (CFA 632), SOUTHEAST (REAR) ELEVATION, VIEW LOOKING NORTHWEST.
ID-1-31	COMMANDING OFFICER'S QUARTERS, GARAGE (CFA 632), OBLIQUE FROM EAST CORNER, VIEW LOOKING WEST.
ID-1-32	COMMANDING OFFICER'S QUARTERS, GARAGE (CFA 632), NORTHEAST (SIDE) ELEVATION, VIEW LOOKING SOUTHWEST.
ID-1-33	COMMANDING OFFICER'S QUARTERS, GARAGE (CFA 632), OBLIQUE FROM NORTH CORNER, VIEW LOOKING SOUTH.
ID-1-34	COMMANDING OFFICER'S QUARTERS, GARAGE (CFA 632), DETAIL OF SOUTHWEST (SIDE) ELEVATION - SIDE DOOR - VIEW LOOKING NORTHEAST.

Idaho National Engineering Laboratory,  
Arco Naval Proving Ground  
HALS No. ID-1  
INDEX TO PHOTOGRAPHS  
(Page 4)

ID-1-35	COMMANDING OFFICER'S QUARTERS, GARAGE (CFA 632), DETAIL OF SOUTHWEST (SIDE) ELEVATION - TYPICAL WINDOW - VIEW LOOKING NORTHEAST.
ID-1-36	COMMANDING OFFICER'S QUARTERS, GARAGE (CFA 632), DETAIL OF NORTHWEST (FRONT) ELEVATION - OVERHEAD/DRIVEWAY LIGHT MOUNTED IN GABLE - VIEW LOOKING SOUTH/SOUTHWEST.
ID-1-37	CARETAKER'S QUARTERS (CFA 613), CONTEXT VIEW LOOKING NORTH/NORTHWEST.
ID-1-38	CARETAKER'S QUARTERS (CFA 613), SOUTHEAST (FRONT) ELEVATION, VIEW LOOKING NORTHWEST.
ID-1-39	CARETAKER'S QUARTERS (CFA 613), OBLIQUE FROM EAST CORNER, VIEW LOOKING WEST.
ID-1-40	CARETAKER'S QUARTERS (CFA 613), NORTHEAST (SIDE) ELEVATION, VIEW LOOKING SOUTHWEST.
ID-1-41	CARETAKER'S QUARTERS (CFA 613), OBLIQUE FROM NORTH CORNER, VIEW LOOKING SOUTH.
ID-1-42	CARETAKER'S QUARTERS (CFA 613), NORTHWEST (REAR) ELEVATION, VIEW LOOKING SOUTHEAST.
ID-1-43	CARETAKER'S QUARTERS (CFA 613), OBLIQUE FROM WEST CORNER, VIEW LOOKING EAST.
ID-1-44	CARETAKER'S QUARTERS (CFA 613), SOUTHWEST (SIDE) ELEVATION, VIEW LOOKING NORTHEAST.
ID-1-45	CARETAKER'S QUARTERS (CFA 613), OBLIQUE FROM SOUTH CORNER, VIEW LOOKING NORTH.
ID-1-46	CARETAKER'S QUARTERS (CFA 613), DETAIL OF SOUTHEAST (FRONT) ELEVATION - FRONT ENTRY AND FOYER WINDOW - VIEW LOOKING WEST.

Idaho National Engineering Laboratory,  
Arco Naval Proving Ground  
HALS No. ID-1  
INDEX TO PHOTOGRAPHS  
(Page 5)

ID-1-47	CARETAKER'S QUARTERS (CFA 613), DETAIL OF NORTHWEST (SIDE) ELEVATION - SIDE DOOR - VIEW LOOKING SOUTHWEST.
ID-1-48	CARETAKER'S QUARTERS (CFA 613), DETAIL OF NORTHWEST (REAR) ELEVATION - BASEMENT ENTRANCE - VIEW LOOKING EAST.
ID-1-49	CARETAKER'S QUARTERS (CFA 613), DETAIL OF SOUTHEAST (FRONT) ELEVATION - TYPICAL GROUND FLOOR WINDOW - VIEW LOOKING NORTHWEST.
ID-1-50	CARETAKER'S QUARTERS (CFA 613), DETAIL OF SOUTHWEST (SIDE) ELEVATION - TYPICAL BASEMENT WINDOW - VIEW LOOKING NORTHEAST.
ID-1-51	PUMP HOUSE (CFA 642), NORTHWEST (FRONT) ELEVATION, VIEW LOOKING SOUTHEAST.
ID-1-52	PUMP HOUSE (CFA 642), OBLIQUE FROM WEST CORNER, VIEW LOOKING EAST.
ID-1-53	PUMP HOUSE (CFA 642), SOUTHWEST (SIDE) ELEVATION, VIEW LOOKING NORTHEAST.
ID-1-54	PUMP HOUSE (CFA 642), OBLIQUE FROM SOUTH CORNER, VIEW LOOKING NORTH.
ID-1-55	PUMP HOUSE (CFA 642), SOUTHEAST (REAR) ELEVATION, VIEW LOOKING NORTHWEST.
ID-1-56	PUMP HOUSE (CFA 642), OBLIQUE FROM EAST CORNER, VIEW LOOKING WEST.
ID-1-57	PUMP HOUSE (CFA 642), OBLIQUE FROM NORTH CORNER, VIEW LOOKING SOUTH.
ID-1-58	PUMP HOUSE (CFA 642), DETAIL OF NORTHWEST (FRONT) ELEVATION – DOOR - VIEW LOOKING SOUTHEAST.

Idaho National Engineering Laboratory,  
Arco Naval Proving Ground  
HALS No. ID-1  
INDEX TO PHOTOGRAPHS  
(Page 6)

ID-1-59	PUMP HOUSE (CFA 642), DETAIL OF SOUTHWEST (SIDE) ELEVATION - TYPICAL WINDOW - VIEW LOOKING NORTHEAST.
ID-1-60	PUMP HOUSE (CFA 651), SOUTHEAST (FRONT) ELEVATION, VIEW LOOKING NORTHWEST.
ID-1-61	PUMP HOUSE (CFA 651), OBLIQUE FROM EAST CORNER, VIEW LOOKING WEST.
ID-1-62	PUMP HOUSE (CFA 651), NORTHEAST (SIDE) ELEVATION, VIEW LOOKING SOUTHWEST.
ID-1-63	PUMP HOUSE (CFA 651), OBLIQUE FROM NORTH CORNER, VIEW LOOKING SOUTH.
ID-1-64	PUMP HOUSE (CFA 651), NORTHWEST (REAR) ELEVATION, VIEW LOOKING SOUTHEAST.
ID-1-65	PUMP HOUSE (CFA 651), OBLIQUE FROM WEST CORNER, VIEW LOOKING EAST.
ID-1-66	PUMP HOUSE (CFA 651), SOUTHWEST (SIDE) ELEVATION, VIEW LOOKING NORTHEAST.
ID-1-67	PUMP HOUSE (CFA 651), OBLIQUE FROM SOUTH CORNER, VIEW LOOKING NORTH.
ID-1-68	PUMP HOUSE (CFA 651), DETAIL OF SOUTHEAST (FRONT) ELEVATION – DOOR - VIEW LOOKING NORTHWEST.
ID-1-69	PUMP HOUSE (CFA 651), DETAIL OF NORTHEAST (SIDE) ELEVATION - TYPICAL WINDOW - VIEW LOOKING SOUTHWEST.
ID-1-70	PROOF AREA, CONCUSSION WALL (CFA 633), SOUTHWEST ELEVATION, VIEW LOOKING NORTH/NORTHEAST.
ID-1-71	PROOF AREA, CONCUSSION WALL (CFA 633), OBLIQUE FROM WEST CORNER, NORTHWEST END OF WALL, VIEW LOOKING EAST.

Idaho National Engineering Laboratory,  
Arco Naval Proving Ground  
HALS No. ID-1  
INDEX TO PHOTOGRAPHS  
(Page 7)

ID-1-72	PROOF AREA, CONCUSSION WALL (CFA 633), DETAIL OF SOUTHWEST ELEVATION - WESTERN MOST BAY - VIEW LOOKING NORTH.
ID-1-73	PROOF AREA, CONCUSSION WALL (CFA 633), DETAIL OF SOUTHWEST ELEVATION - SECOND BAY FROM NORTHWEST END OF WALL, OBLIQUE FROM WEST CORNER - VIEW LOOKING NORTH/NORTHEAST.
ID-1-74	CFA 633 PROOF AREA, CONCUSSION WALL (CFA 633), DETAIL OF SOUTHWEST ELEVATION - SECOND BAY FROM NORTHWEST END OF WALL, SOUTHWEST ELEVATION - VIEW LOOKING NORTH/NORTHEAST.
ID-1-75	PROOF AREA, CONCUSSION WALL (CFA 633), DETAIL OF SOUTHWEST ELEVATION, THIRD AND FORTH BAYS FROM NORTHWEST END OF WALL – SOUTHWEST ELEVATION, VIEW LOOKING NORTH/NORTHEAST.
ID-1-76	PROOF AREA, CONCUSSION WALL (CFA 633), DETAIL OF SOUTHWEST ELEVATION – FIFTH AND SIXTH BAYS FROM NORTHWEST END OF WALL, OBLIQUE FROM WEST CORNER – VIEW LOOKING NORTHEAST.
ID-1-77	PROOF AREA, CONCUSSION WALL (CFA 633), DETAIL OF SOUTHWEST ELEVATION – FIFTH AND SIXTH BAYS FROM NORTHWEST END OF WALL, OBLIQUE FROM SOUTH CORNER – VIEW LOOKING NORTHWEST.
ID-1-78	PROOF AREA, CONCUSSION WALL (CFA 633), DETAIL OF SOUTHWEST ELEVATION – SEVENTH BAY FROM NORTHWEST END OF WALL, SOUTHWEST ELEVATION – VIEW LOOKING NORTH/NORTHEAST.
ID-1-79	PROOF AREA, CONCUSSION WALL (CFA 633), DETAIL OF SOUTHWEST ELEVATION – EIGHTH (LAST) BAY FROM NORTHWEST END OF WALL, SOUTHWEST ELEVATION – VIEW LOOKING NORTHEAST.

Idaho National Engineering Laboratory,  
Arco Naval Proving Ground  
HALS No. ID-1  
INDEX TO PHOTOGRAPHS  
(Page 8)

ID-1-80	PROOF AREA, CONCUSSION WALL (CFA 633), DETAIL OF SOUTHWEST ELEVATION – EIGHTH (LAST) BAY FROM NORTHWEST END OF WALL, OBLIQUE FROM SOUTH CORNER – VIEW LOOKING NORTHWEST.
ID-1-81	PROOF AREA, CONCUSSION WALL (CFA 633), OBLIQUE FROM SOUTH CORNER (SOUTHEAST END OF WALL), VIEW LOOKING NORTH.
ID-1-82	PROOF AREA, CONCUSSION WALL (CFA 633), SOUTHEAST END OF WALL, VIEW LOOKING NORTHWEST.
ID-1-83	PROOF AREA, CONCUSSION WALL (CFA 633), OBLIQUE FROM EAST CORNER (SOUTHEAST END OF WALL), VIEW LOOKING WEST.
ID-1-84	PROOF AREA, CONCUSSION WALL (CFA 633), NORTHEAST ELEVATION (SOUTHEAST END OF WALL), VIEW LOOKING SOUTHWEST.
ID-1-85	PROOF AREA, CONCUSSION WALL (CFA 633), DETAIL OF NORTHEAST ELEVATION - HIGH BAY ADDITION, NORTHEAST ELEVATION – VIEW LOOKING SOUTH/SOUTHWEST.
ID-1-86	PROOF AREA, CONCUSSION WALL (CFA 633), NORTHEAST ELEVATION (NORTHWEST END OF WALL WITH OBSERVATION TOWER), VIEW LOOKING SOUTH/SOUTHWEST.
ID-1-87	PROOF AREA, CONCUSSION WALL (CFA 633), DETAIL OF NORTHEAST ELEVATION – OBSERVATION TOWER – VIEW LOOKING SOUTH/SOUTHWEST.
ID-1-88	PROOF AREA, CONCUSSION WALL (CFA 633), OBLIQUE FROM NORTH CORNER (NORTHWEST END OF WALL), VIEW LOOKING SOUTH.
ID-1-89	PROOF AREA, CONCUSSION WALL (CFA 633), OBLIQUE/DETAIL OF WEST CORNER (NORTHWEST END OF WALL) – CONCRETE AND RE-BAR - VIEW LOOKING EAST.

Idaho National Engineering Laboratory,  
Arco Naval Proving Ground  
HALS No. ID-1  
INDEX TO PHOTOGRAPHS  
(Page 9)

ID-1-90	PROOF AREA, CONCUSSION WALL (CFA 633), DETAIL OF SOUTHWEST ELEVATION – SECOND BAY FROM NORTHWEST END OF WALL, TYPICAL WINDOW – VIEW LOOKING NORTH.
ID-1-91	PROOF AREA, CONCUSSION WALL (CFA 633), DETAIL OF SOUTHWEST ELEVATION – THIRD BAY FROM NORTHWEST END OF WALL, TYPICAL DOOR – VIEW LOOKING NORTH.
ID-1-92	PROOF AREA, CONCUSSION WALL (CFA 633), DETAIL OF SOUTHWEST ELEVATION – THIRD BAY FROM NORTHWEST END OF WALL, TYPICAL WINDOW – VIEW LOOKING NORTH.
ID-1-93	PROOF AREA, CONCUSSION WALL (CFA 633), DETAIL OF NORTHEAST ELEVATION – NORTHWEST END OF WALL, DOOR AND WINDOW – VIEW LOOKING SOUTHWEST.
ID-1-94	NPG RAIL SPUR, CONTEXT VIEW WITHIN RESIDENTIAL AREA LOOKING TOWARD PROOF AREA, VIEW LOOKING NORTH/NORTHEAST.
ID-1-95	PROOF AREA, GANTRY CRANE, SOUTHWEST ELEVATION, VIEW LOOKING NORTHEAST.
ID-1-96	PROOF AREA, GANTRY CRANE, OBLIQUE FROM EAST CORNER – CONCUSSION WALL IN BACKGROUND – VIEW LOOKING WEST/SOUTHWEST.
ID-1-97	PROOF AREA, GANTRY CRANE, OBLIQUE FROM NORTH CORNER, VIEW LOOKING SOUTH.
ID-1-98	PROOF AREA, GANTRY CRANE, NORTHEAST ELEVATION, VIEW LOOKING SOUTHWEST.
ID-1-99	PROOF AREA, GUN EMPLACEMENTS, CONTEXT VIEW OF TRANSFER CAR, GANTRY CRANE IN BACKGROUND, VIEW LOOKING SOUTH.
ID-1-100	PROOF AREA, GUN EMPLACEMENTS, DETAIL OF TRANSFER CAR, POWER STATION IN LEFT BACKGROUND, VIEW LOOKING NORTH.

Idaho National Engineering Laboratory,  
Arco Naval Proving Ground  
HALS No. ID-1  
INDEX TO PHOTOGRAPHS  
(Page 10)

ID-1-101	PROOF AREA, GUN EMPLACEMENTS, DETAIL OF TRANSFER CAR, POWER STATION IN BACKGROUND, VIEW LOOKING NORTHWEST.
ID-1-102	PROOF AREA, GUN EMPLACEMENTS, DETAIL OF TRANSFER CAR, VIEW LOOKING WEST.
ID-1-103	PROOF AREA, GUN EMPLACEMENTS, DETAIL VIEW LOOKING DOWN RAILROAD TRACKS TOWARD TRANSFER CAR, VIEW LOOKING SOUTHEAST.
ID-1-104	PROOF AREA, GUN EMPLACEMENTS, DETAIL VIEW – SEVENTH BAY FROM NORTHWEST, TYPICAL GUN ALLEY – VIEW LOOKING NORTH/NORTHEAST.
ID-1-105	PROOF AREA, GUN EMPLACEMENTS, DETAIL VIEW – “S-A-F-E-T-Y-F-I-R-S-T” MESSAGE PANTED ON ENDS OF GUN ALLEYS – VIEW LOOKING EAST/SOUTHEAST.
ID-1-106	PROOF AREA, GUN EMPLACEMENTS, STORAGE AREA, OBLIQUE FROM SOUTHWEST CORNER - CONCUSSION WALL (CFA 633) IN BACKGROUND - VIEW LOOKING NORTHEAST.
ID-1-107	PROOF AREA, GUN EMPLACEMENTS, STORAGE AREA, DETAIL VIEW OF TYPICAL STORAGE ALLEY, VIEW LOOKING NORTH.
ID-1-108	PROOF AREA, PERIMETER LIGHTING, CONTEXT VIEW LOOKING DOWN ROW OF TYPICAL LIGHTS, VIEW LOOKING SOUTHWEST.
ID-1-109	PROOF AREA, PERIMETER LIGHTING, DETAIL VIEW OF TYPICAL LIGHT, VIEW LOOKING WEST.
ID-1-110	BUNKER (CFA 637), OBLIQUE FROM NORTH CORNER, VIEW LOOKING SOUTH.
ID-1-111	BUNKER (CFA 637), OBLIQUE FROM WEST CORNER, VIEW LOOKING EAST/NORTHEAST.
ID-1-112	BUNKER (CFA 637), SOUTHWEST ELEVATION, VIEW LOOKING NORTH /NORTHEAST.



ID-1-113	BUNKER (CFA 637), SOUTHEAST ELEVATION, VIEW LOOKING NORTHWEST.
ID-1-114	BUNKER (CFA 637), OBLIQUE FROM EAST CORNER, VIEW LOOKING WEST/SOUTHWEST.
ID-1-115	BUNKER (CFA 638), NORTHEAST ELEVATION, VIEW LOOKING SOUTHWEST.
ID-1-116	BUNKER (CFA 638), OBLIQUE FROM NORTH CORNER, VIEW LOOKING SOUTH.
ID-1-117	BUNKER (CFA 638), NORTHWEST ELEVATION, VIEW LOOKING SOUTHEAST.
ID-1-118	BUNKER (CFA 638), OBLIQUE FROM WEST CORNER, VIEW LOOKING EAST.
ID-1-119	BUNKER (CFA 638), SOUTHWEST ELEVATION, VIEW LOOKING NORTHEAST.
ID-1-120	BUNKER (CFA 638), OBLIQUE FROM SOUTH CORNER, VIEW LOOKING NORTH/NORTHWEST.
ID-1-121	BUNKER (CFA 638), SOUTHEAST ELEVATION, VIEW LOOKING NORTHWEST.
ID-1-122	BUNKER (CFA 638), OBLIQUE FROM EAST CORNER, VIEW LOOKING WEST.
ID-1-123	CIVILIAN RESIDENTIAL AREA, CONTEXT VIEW LOOKING TOWARD PROOF AREA, VIEW LOOKING NORTH.
ID-1-124	CIVILIAN RESIDENTIAL AREA, CONTEXT VIEW LOOKING TOWARD MARINE BARRACKS (CFA 606), SIDEWALK IN FOREGROUND, STAR-SHAPED LANDSCAPING ELEMENTS IN MID-GROUND, VIEW LOOKING WEST.
ID-1-125	FLAGPOLE, CONTEXT VIEW LOOKING NORTHEAST.
ID-1-126	FLAGPOLE, DETAIL – FLAGPOLE BASE - VIEW LOOKING EAST.

Idaho National Engineering Laboratory,  
Arco Naval Proving Ground  
HALS No. ID-1  
INDEX TO PHOTOGRAPHS  
(Page 12)

ID-1-127	STREET SIGN, DETAIL - CORNER OF MAIN AND MEMPHIS STREETS - VIEW LOOKING NORTHEAST.
ID-1-128	CONCRETE BASIN, VIEW FROM SOUTHWEST EDGE, VIEW LOOKING WEST/NORTHWEST.
ID-1-129	DUMP, CONTEXT VIEW LOOKING DOWN CANAL, VIEW LOOKING NORTHWEST.
ID-1-130	PROOF AREA/RANGE, WEST MONUMENT ROAD (LINCOLN BOULEVARD), CONTEXT VIEW LOOKING DOWN ASPHALT ROAD TOWARD CURVE WHICH MARKS THE SEPARATION OF WEST MONUMENT ROAD FROM LINCOLN BOULEVARD, BIG SOUTHERN BUTTE IN BACKGROUND, VIEW LOOKING SOUTH.
ID-1-131	PROOF AREA/RANGE, WEST MONUMENT ROAD (T-20), CONTEXT/OBLIQUE VIEW LOOKING DOWN DIRT TWO-TRACK ROAD, LEMHI RANGE IN BACKGROUND, VIEW LOOKING NORTH/NORTHWEST.
ID-1-132	PROOF AREA/RANGE, WEST MONUMENT ROAD, CONTEXT VIEW LOOKING DOWN DIRT TWO-TRACK ROAD, BIG SOUTHERN BUTTE IN BACKGROUND, VIEW LOOKING SOUTH.
ID-1-133	PROOF AREA/RANGE, CENTER LINE ROAD (LINCOLN BOULEVARD), CONTEXT VIEW LOOKING DOWN ASPHALT ROAD, BIG SOUTHERN BUTTE IN BACKGROUND, VIEW LOOKING SOUTHWEST.
ID-1-134	PROOF AREA/RANGE, EAST MONUMENT ROAD (T-17), CONTEXT VIEW LOOKING DOWN DIRT TWO-TRACK ROAD TOWARD DISTANT RISE, VIEW LOOKING NORTH/NORTHEAST.
ID-1-135	PROOF AREA/RANGE, EAST MONUMENT ROAD (T-17), CONTEXT VIEW LOOKING DOWN RISE ON DIRT TWO-TRACK ROAD TOWARD LEMHI RANGE, VIEW LOOKING NORTH/NORTHEAST.
ID-1-136	PROOF AREA/RANGE, USN 01, CONTEXT VIEW OF RANGE MONUMENT IN EXCELLENT CONDITION - BIG SOUTHERN BUTTE IN BACKGROUND - VIEW LOOKING WEST.

Idaho National Engineering Laboratory,  
Arco Naval Proving Ground  
HALS No. ID-1  
INDEX TO PHOTOGRAPHS  
(Page 13)

ID-1-137	PROOF AREA/RANGE, USN 01, DETAIL VIEW OF RANGE MONUMENT IN EXCELLENT CONDITION - OBLIQUE LOOKING DOWN FROM EAST CORNER, CAP ON – VIEW LOOKING WEST.
ID-1-138	PROOF AREA/RANGE, USN 01, DETAIL VIEW OF RANGE MONUMENT IN EXCELLENT CONDITION – OBLIQUE LOOKING DOWN FROM EAST CORNER, CAP OFF – VIEW LOOKING WEST.
ID-1-139	PROOF AREA/RANGE, USN 03, CONTEXT VIEW OF RANGE MONUMENT IN POOR CONDITION - LOOKING FROM PLATE END, POWER LINE AND SIGN POST IN BACKGROUND - VIEW LOOKING SOUTH.
ID-1-140	PROOF AREA/RANGE, USN 03, DETAIL VIEW OF RANGE MONUMENT IN POOR CONDITION – LOOKING DOWN ON CRUMBLD MONUMENT FROM PLATE END – VIEW LOOKING SOUTH/SOUTHWEST.
ID-1-141	PROOF AREA/RANGE, USN 06, CONTEXT VIEW OF RANGE MONUMENT IN FAIR CONDITION – SAGE BRUSH COVERED RISE IN BACKGROUND – VIEW LOOKING WEST.
ID-1-142	PROOF AREA/RANGE, USN 06, DETAIL VIEW OF RANGE MONUMENT IN FAIR CONDITION – OBLIQUE LOOKING DOWN FROM EAST CORNER – VIEW LOOKING WEST.
ID-1-143	PROOF AREA/RANGE, USN 07, CONTEXT VIEW OF RANGE MONUMENT IN GOOD CONDITION – SADDLE MOUNTAIN/LEMHI RANGE IN BACKGROUND – VIEW LOOKING NORTH/NORTHWEST.
ID-1-144	PROOF AREA/RANGE, USN 07, DETAIL VIEW OF RANGE MONUMENT IN GOOD CONDITION – OBLIQUE LOOKING DON FROM SOUTH/SOUTHWEST CORNER – VIEW LOOKING NORTH/NORTHWEST.
ID-1-145	PROOF AREA/RANGE, CONCRETE TEST WALLS, CONTEXT VIEW – CONCRETE TEST WALL WITH DETONATION CRATER IN FOREGROUND, BIG SOUTHERN BUTTE IN BACKGROUND – VIEW LOOKING SOUTH/SOUTHWEST.

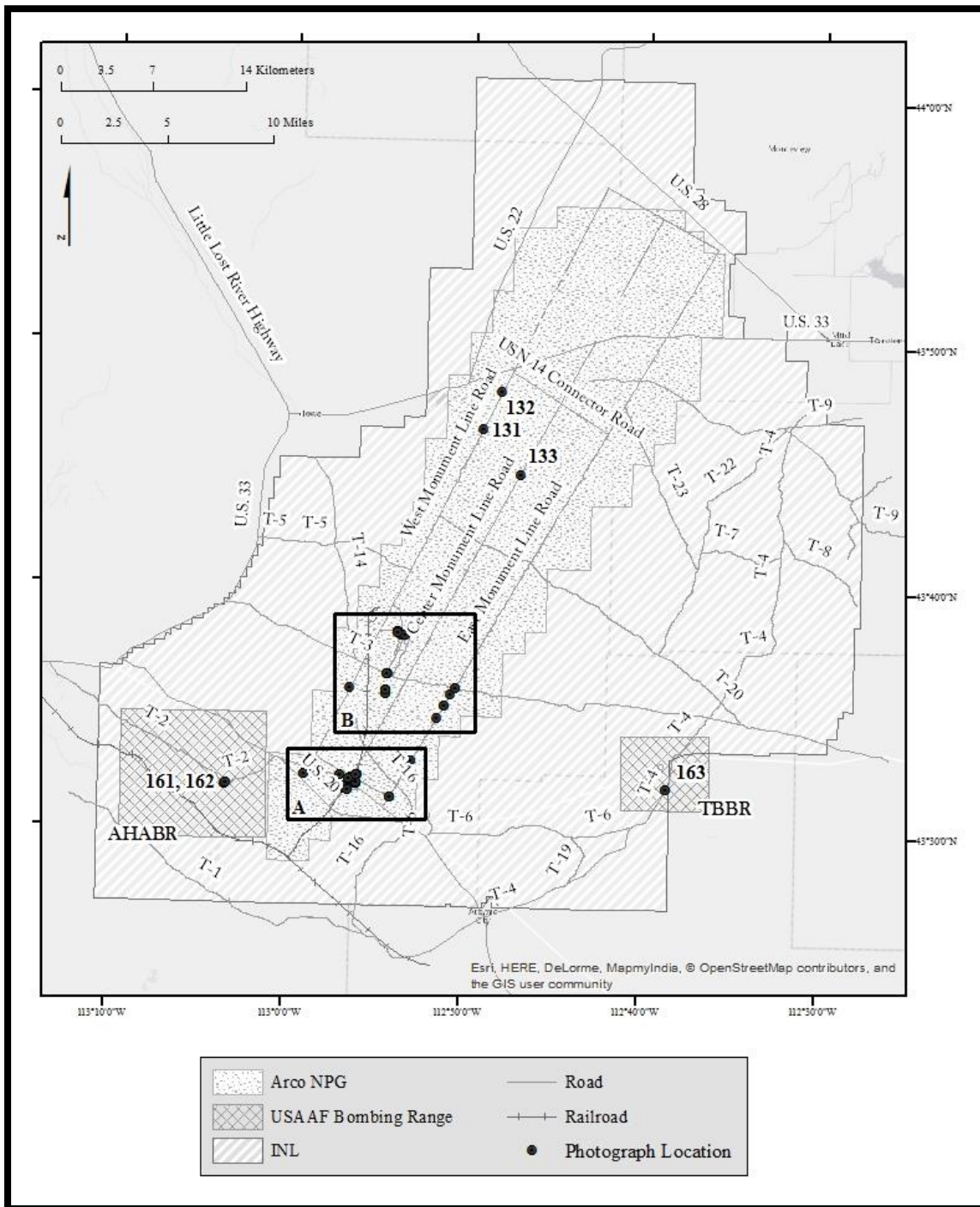
Idaho National Engineering Laboratory,  
Arco Naval Proving Ground  
HALS No. ID-1  
INDEX TO PHOTOGRAPHS  
(Page 14)

ID-1-146	PROOF AREA/RANGE, CONCRETE TEST WALLS, CONTEXT VIEW – OBLIQUE OF TWO CONCRETE TEST WALLS, LOST RIVER RANGE IN BACKGROUND – VIEW LOOKING NORTHWEST.
ID-1-147	PROOF AREA/RANGE, CONCRETE TEST WALLS, NORTHEAST ELEVATION OF SINGLE CONCRETE TEST WALL, BIG SOUTHERN BUTTE IN LEFT BACKGROUND, VIEW LOOKING SOUTHWEST.
ID-1-148	PROOF AREA/RANGE, SCALE MODEL IGLOO TEST AREA, CONTEXT VIEW – DEBRIS (CONCRETE AND RE-BAR) – VIEW LOOKING WEST/NORTHWEST.
ID-1-149	PROOF AREA/RANGE, SCALE MODEL IGLOO TEST AREA, CONTEXT VIEW – OBLIQUE OF SIX SCALE MODEL IGLOOS – VIEW LOOKING NORTHEAST.
ID-1-150	PROOF AREA/RANGE, SCALE MODEL IGLOO TEST AREA, DETAIL VIEW – OBLIQUE OF FIVE SCALE MODEL IGLOOS – VIEW LOOKING SOUTH/SOUTHEAST.
ID-1-151	PROOF AREA/RANGE, SCALE MODEL IGLOO TEST AREA, DETAIL VIEW – CLOSE-UP LOOKING DOWN ON SINGLE SCALE MODEL IGLOO – VIEW LOOKING SOUTH/SOUTHWEST.
ID-1-152	PROOF AREA/RANGE, MASS DETONATION AREA, CONTEXT VIEW – PERSONNEL BUNKER (FOREGROUND) AND CAMERA SHELTER (BACKGROUND), OBLIQUE FROM SOUTHWEST – VIEW LOOKING NORTHEAST.
ID-1-153	PROOF AREA/RANGE, MASS DETONATION AREA, PERSONNEL BUNKER, WEST ELEVATION, VIEW LOOKING SOUTHWEST.
ID-1-154	PROOF AREA/RANGE, MASS DETONATION AREA, CAMERA SHELTER, WEST ELEVATION, VIEW LOOKING EAST.
ID-1-155	PROOF AREA/RANGE, MASS DETONATION AREA, CAMERA SHELTER, OBLIQUE FROM NORTHEAST CORNER, VIEW LOOKING SOUTHWEST.

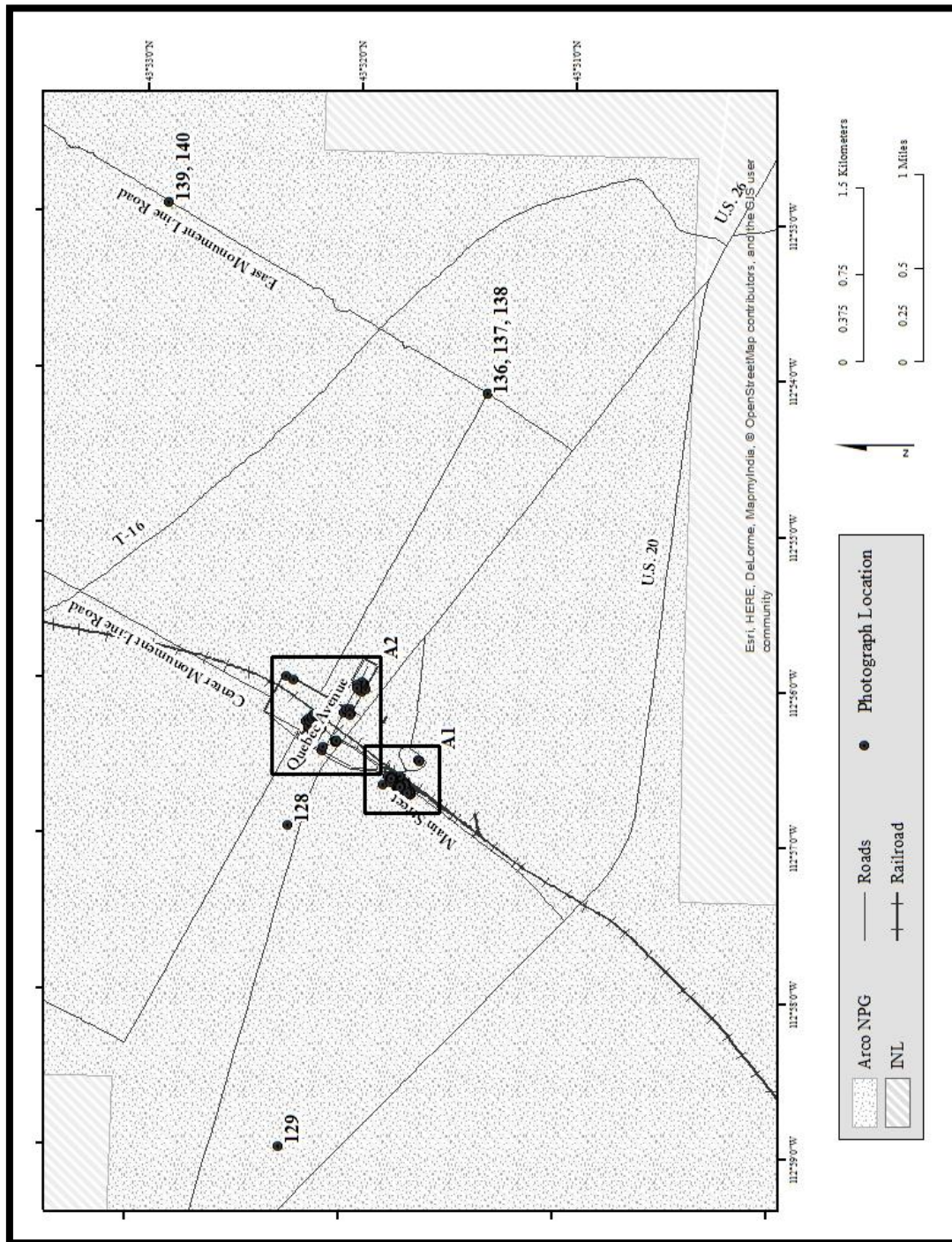
Idaho National Engineering Laboratory,  
Arco Naval Proving Ground  
HALS No. ID-1  
INDEX TO PHOTOGRAPHS  
(Page 15)

ID-1-156	PROOF AREA/RANGE, MASS DETONATION AREA, INSTRUMENT SHELTER, OBLIQUE FROM NORTHEAST CORNER, VIEW LOOKING SOUTHWEST.
ID-1-157	PROOF AREA/RANGE, MASS DETONATION AREA, INSTRUMENT SHELTER, OBLIQUE FROM NORTHWEST CORNER, VIEW LOOKING EAST/SOUTHEAST.
ID-1-158	PROOF AREA/RANGE, MASS DETONATION AREA, INSTRUMENT SHELTER, SOUTHWEST ELEVATION, VIEW LOOKING EAST/NORTHEAST.
ID-1-159	PROOF AREA/RANGE, MASS DETONATION AREA, CONTEXT VIEW - FULL SCALE IGLOO TEST CRATER, TWIN BUTTES IN BACKGROUND - VIEW LOOKING EAST.
ID-1-160	PROOF AREA/RANGE, MASS DETONATION AREA, DETAIL VIEW – - FULL SCALE IGLOO TEST CRATER, TWIN BUTTES IN BACKGROUND – VIEW LOOKING SOUTHEAST.
ID-1-161	ARCO HIGH ALTITUDE BOMBING RANGE, CONTEXT VIEW OF PRACTICE SAND BOMBS, VIEW LOOKING NORTH/NORTHWEST.
ID-1-162	ARCO HIGH ALTITUDE BOMBING RANGE, DETAIL VIEW OF PRACTICE SAND BOMBS, VIEW LOOKING SOUTHEAST.
ID-1-163	TWIN BUTTES HIGH ALTITUDE BOMBING RANGE, CONTEXT VIEW OF RANGE, VIEW LOOKING NORTHWEST

**Black and White Photographs, Location Map: Overview**

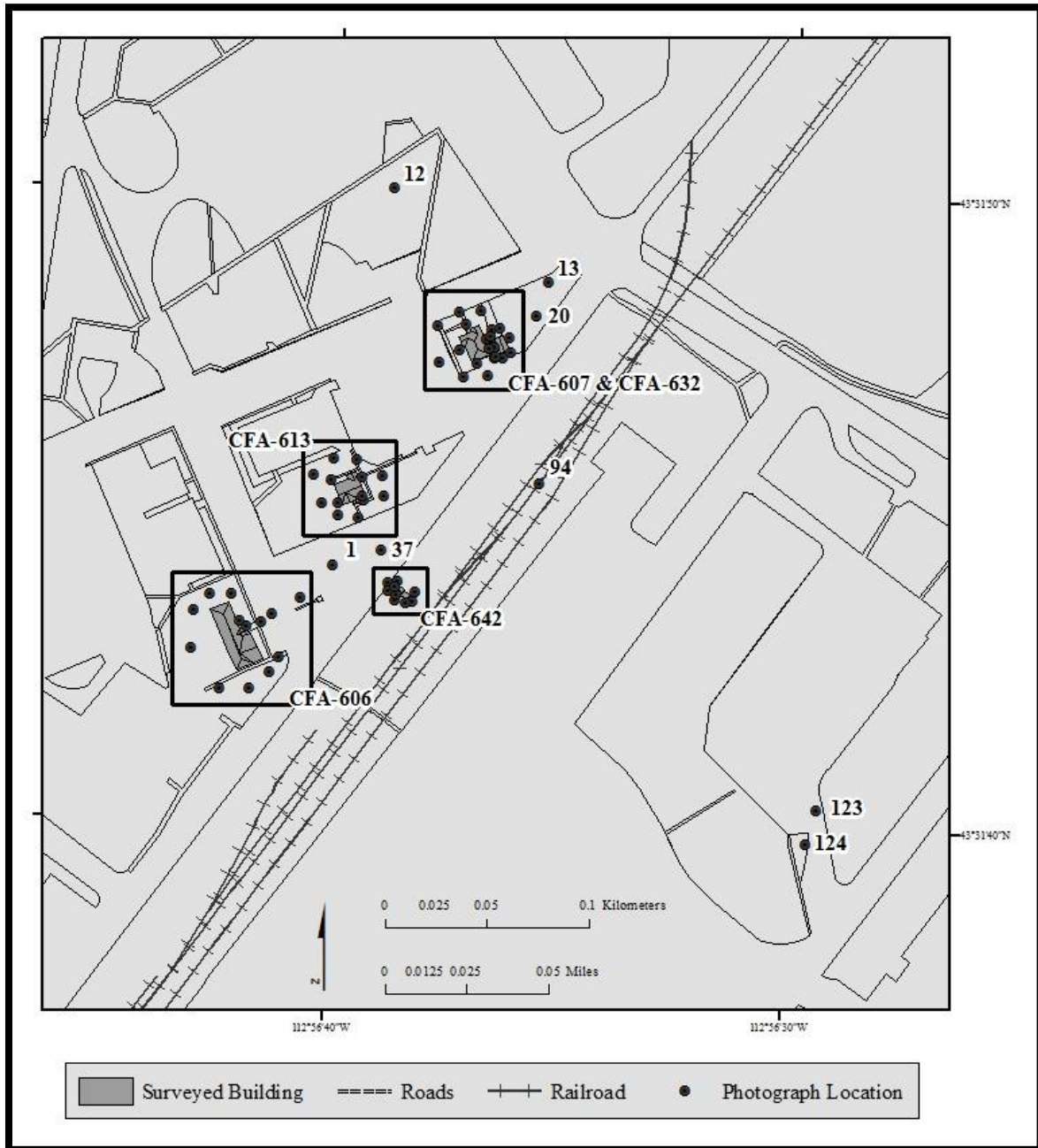


Black and White Photographs, Location Map: Detail A





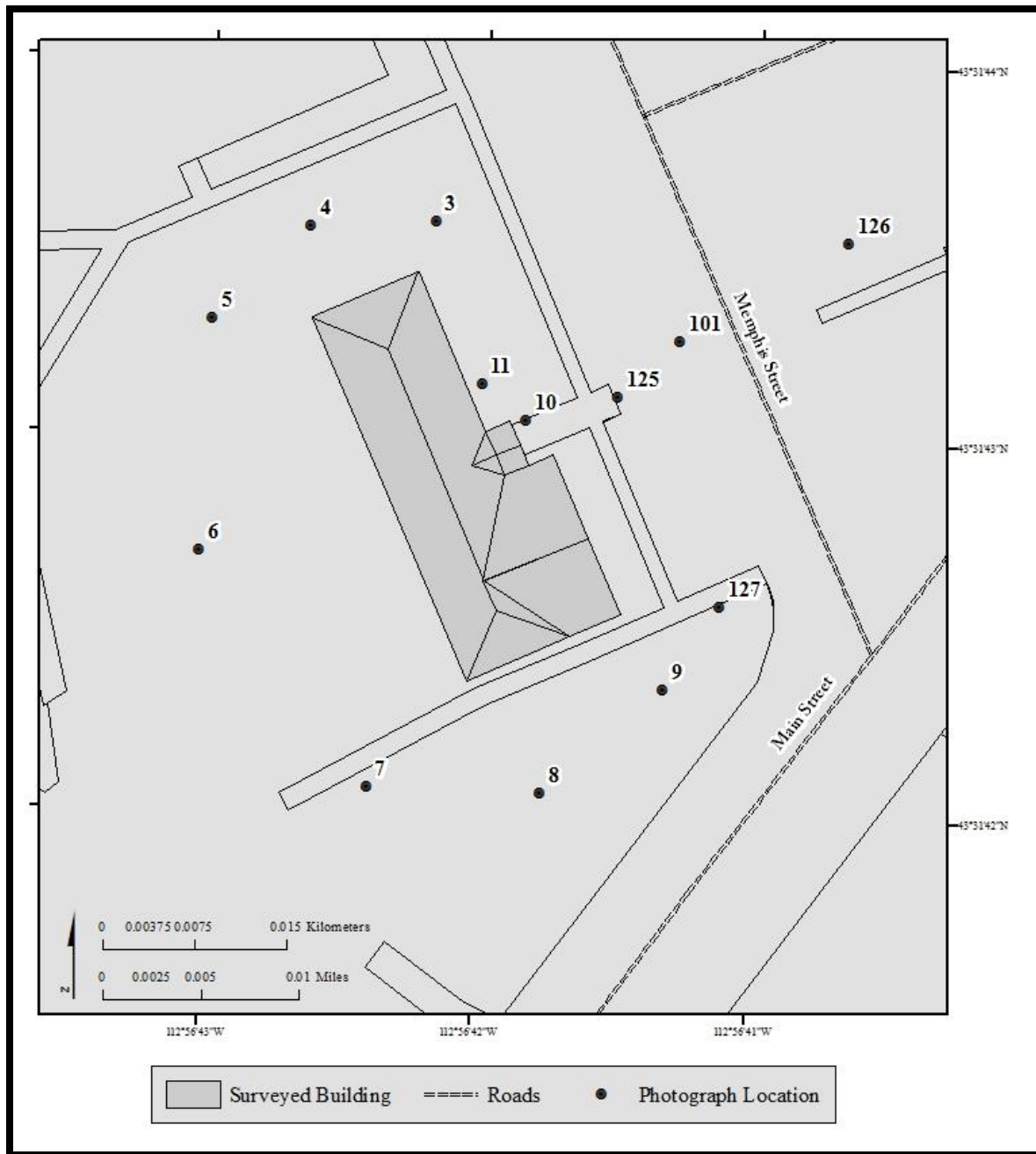
**Black and White Photographs, Location Map: Detail A1**





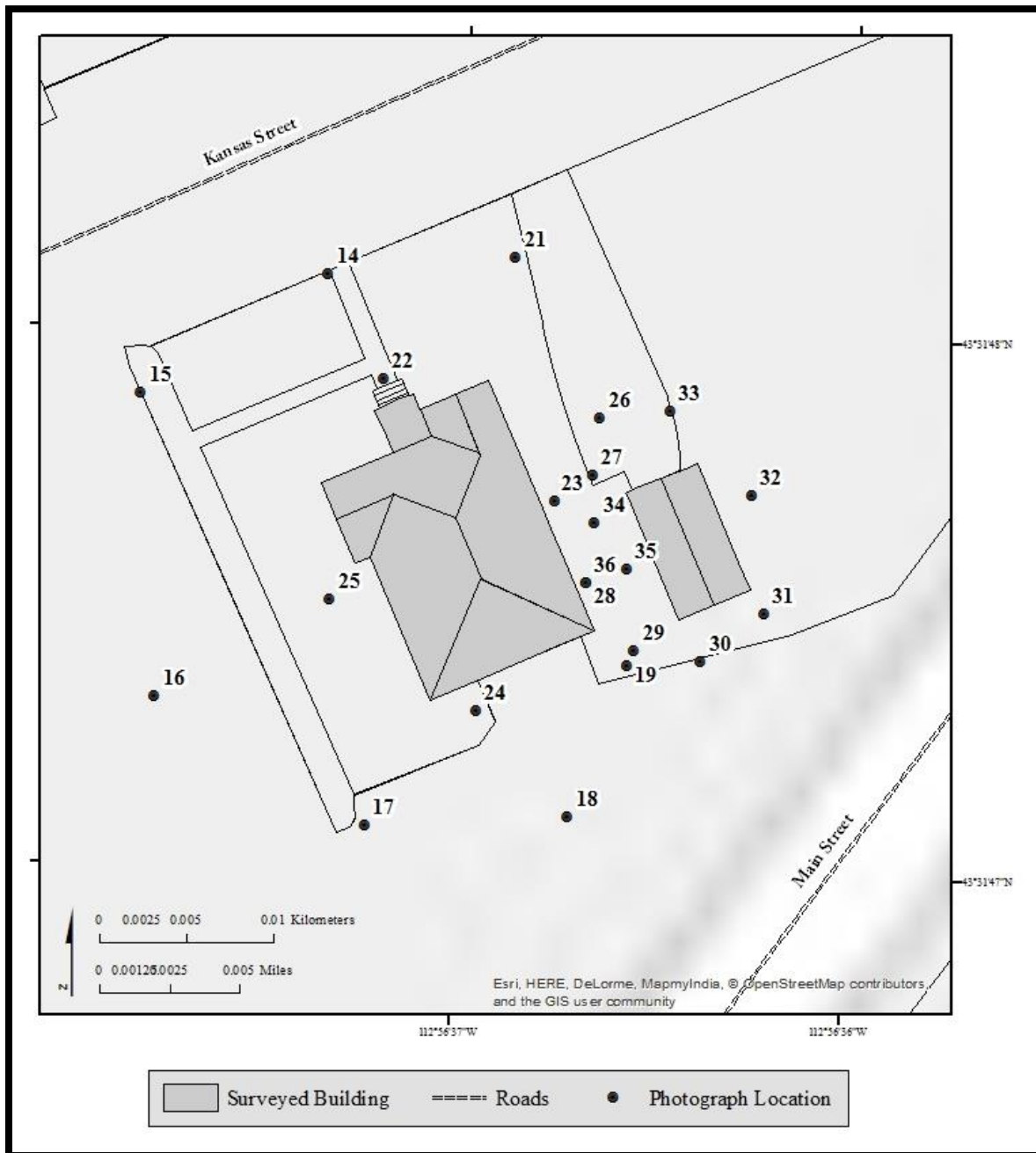
Idaho National Engineering Laboratory,  
Arco Naval Proving Ground  
HALS No. ID-1  
INDEX TO PHOTOGRAPHS  
(Page 19)

Black and White Photographs, Location Map: CFA-606

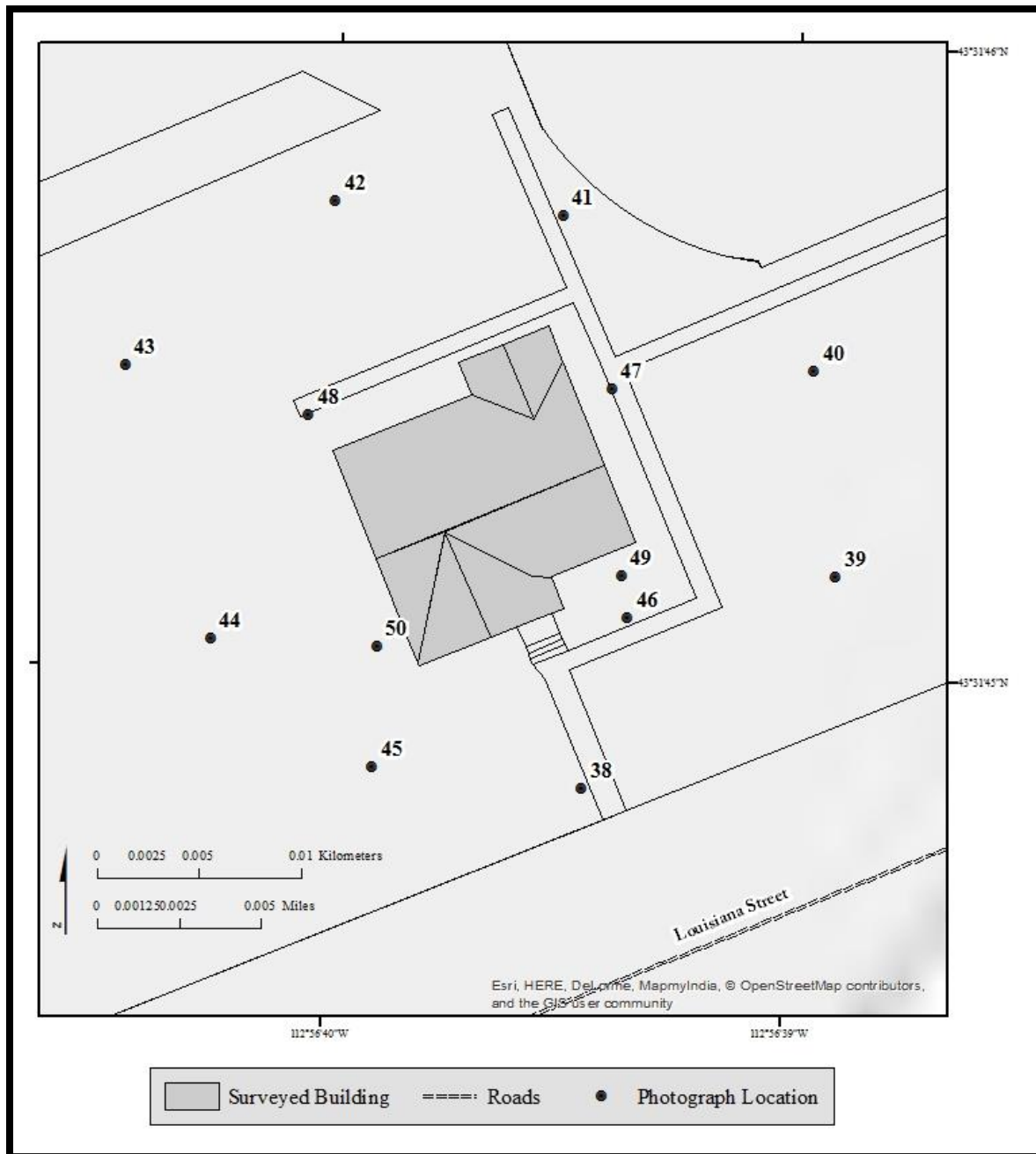


Idaho National Engineering Laboratory,  
Arco Naval Proving Ground  
HALS No. ID-1  
INDEX TO PHOTOGRAPHS  
(Page 20)

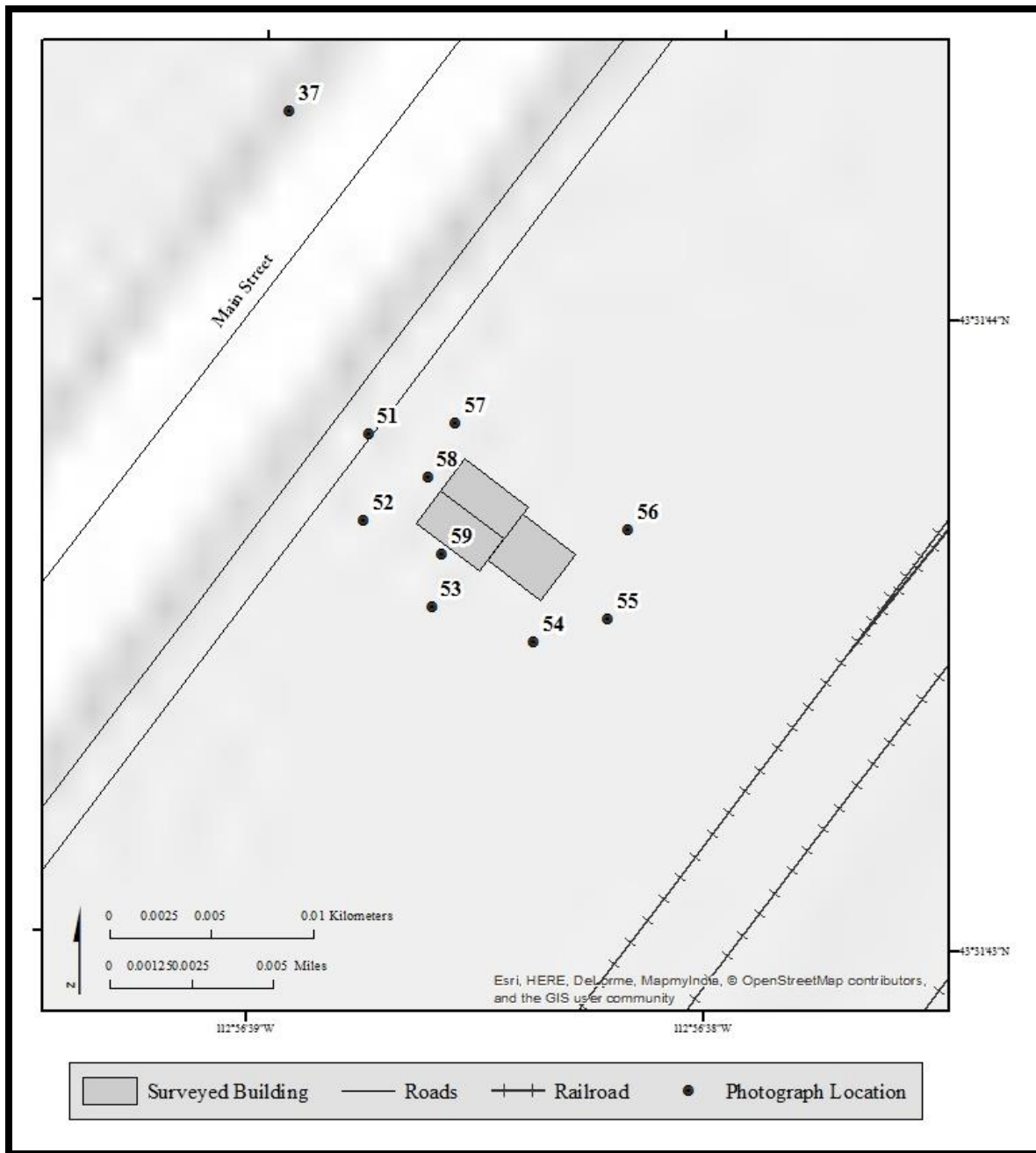
Black and White Photographs, Location Map: CFA-607 and CFA-632



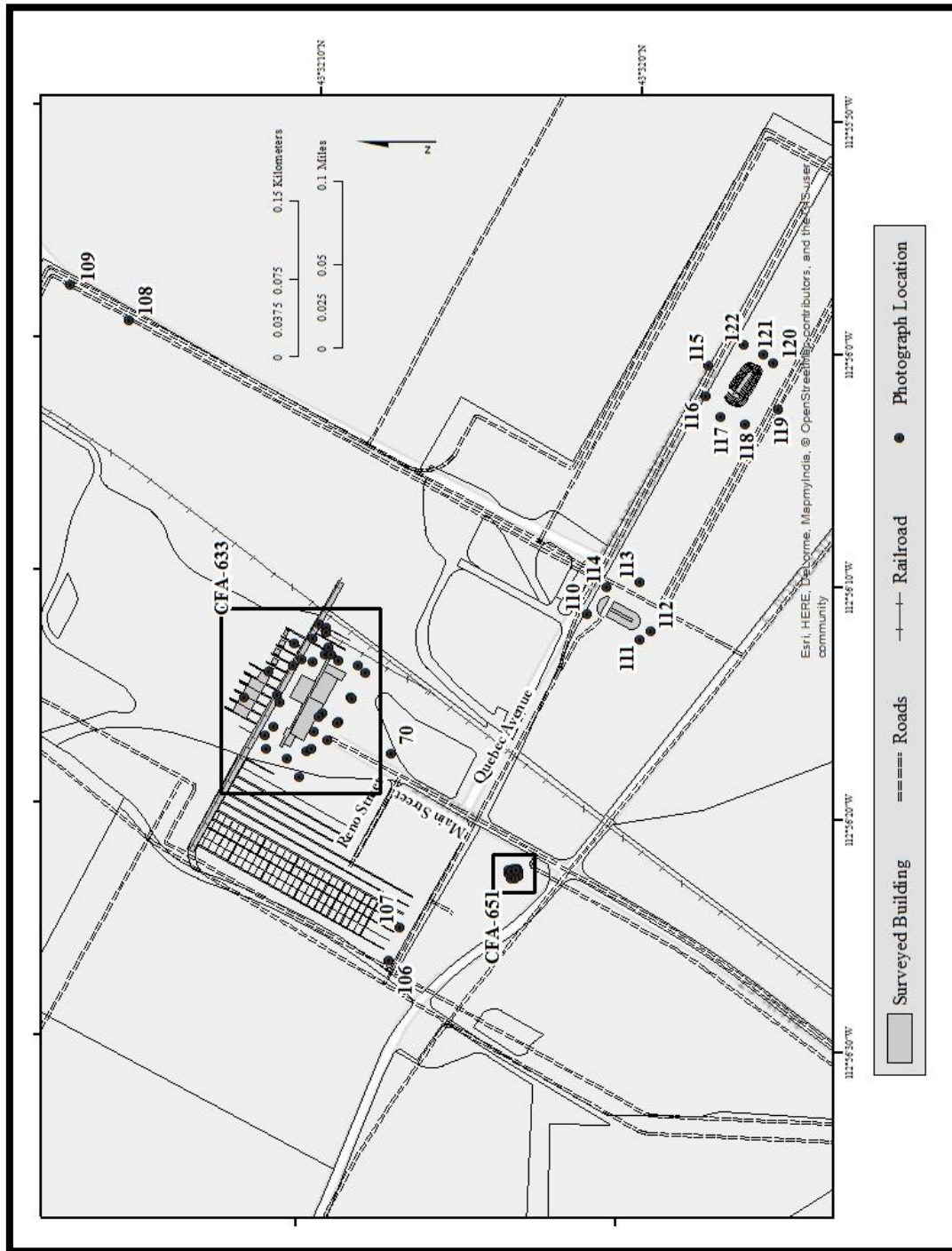
**Black and White Photographs, Location Map: CFA-613**



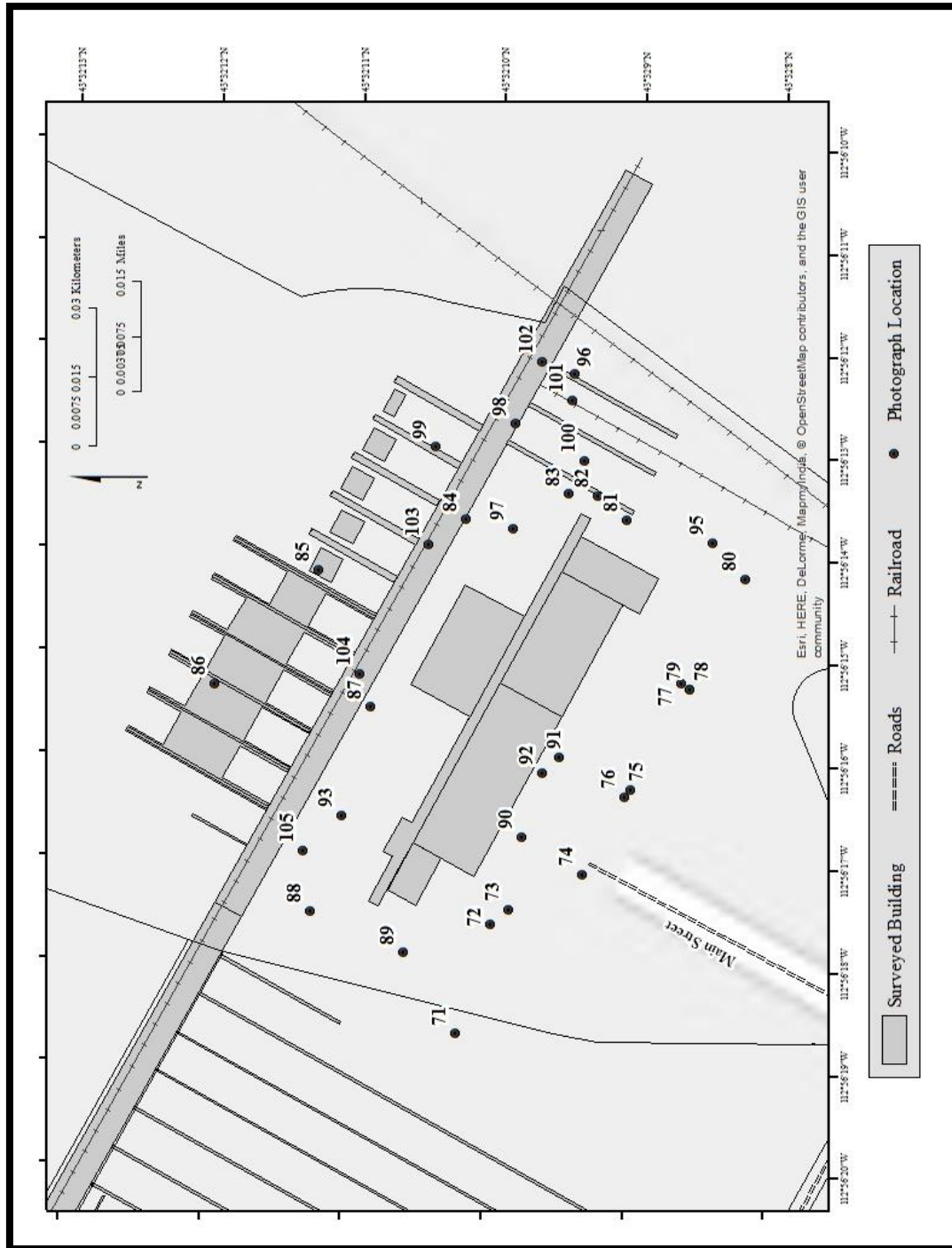
**Black and White Photographs, Location Map: CFA-642**



Black and White Photographs, Location Map: Detail A2

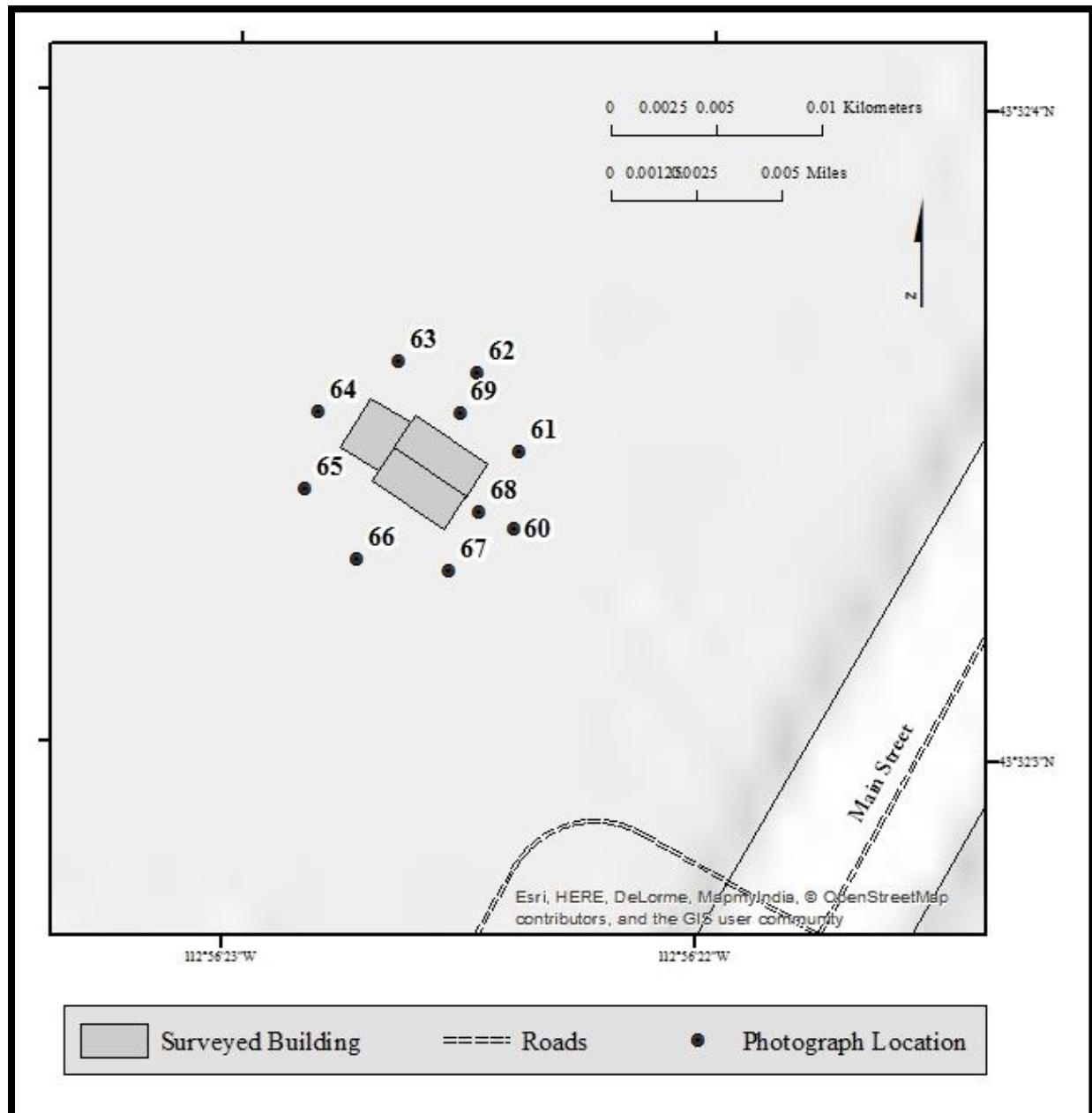


Black and White Photographs, Location Map: CFA-633

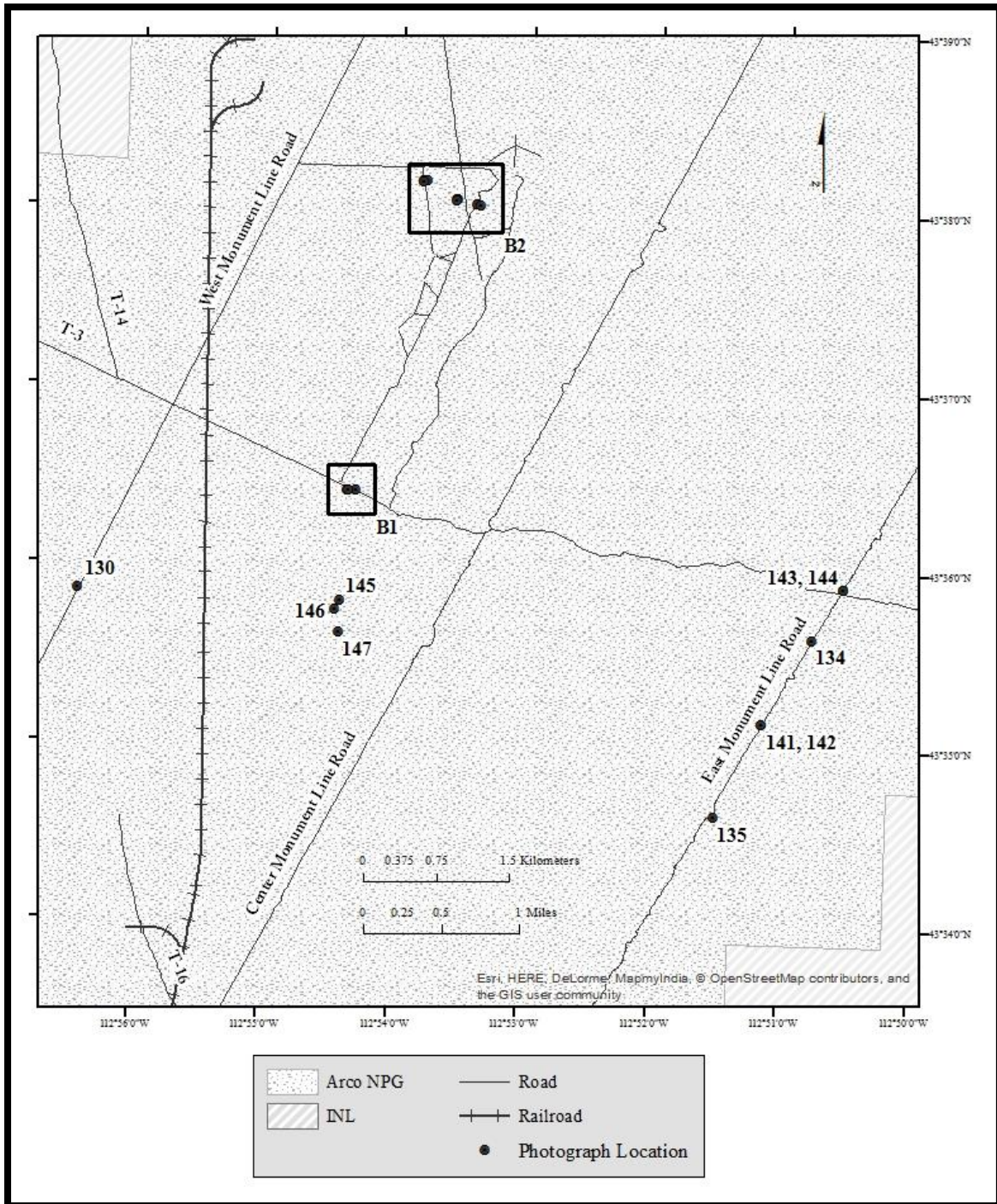




**Black and White Photographs, Location Map: CFA-651**

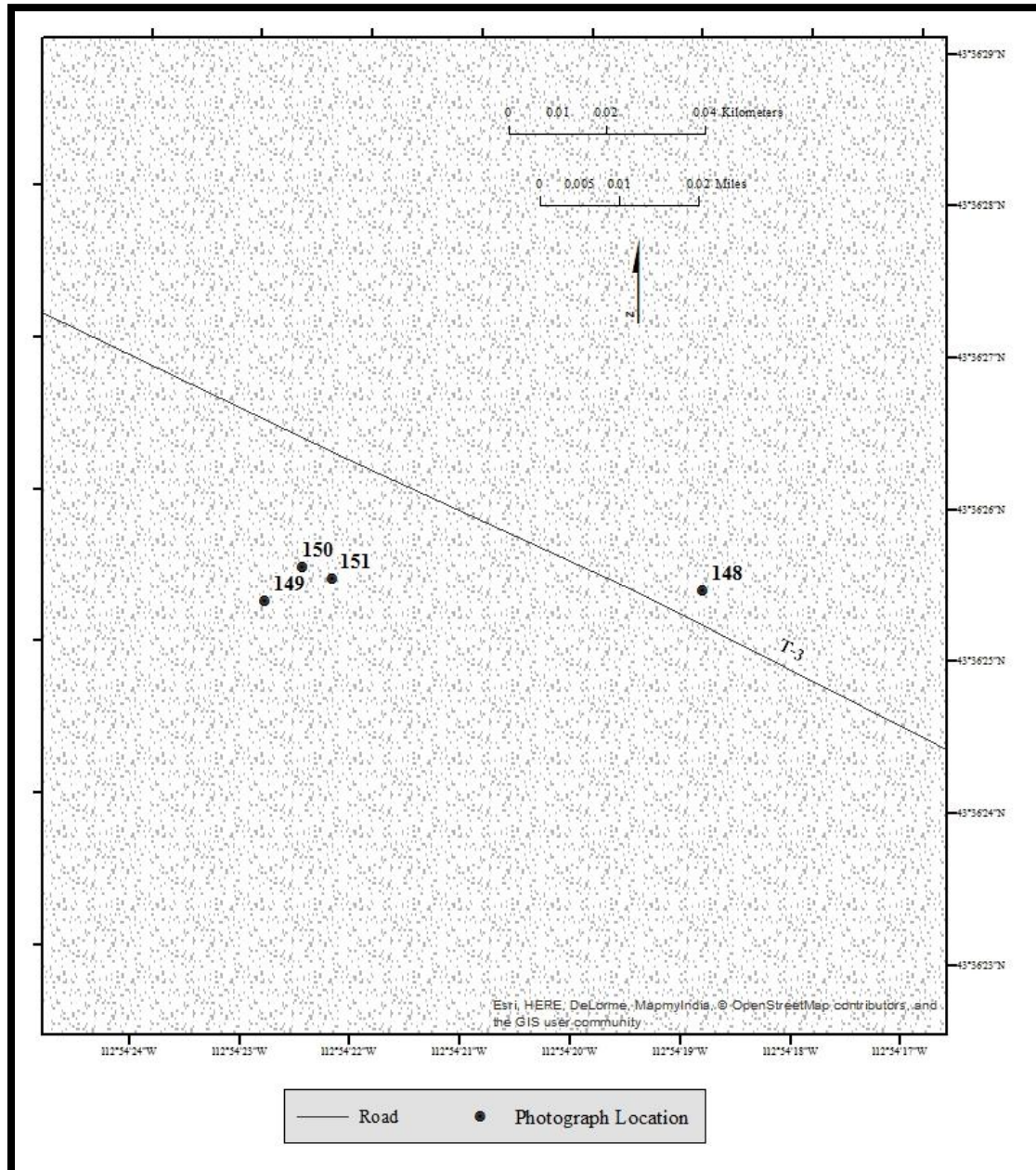


Black and White Photographs, Location Map: Detail B

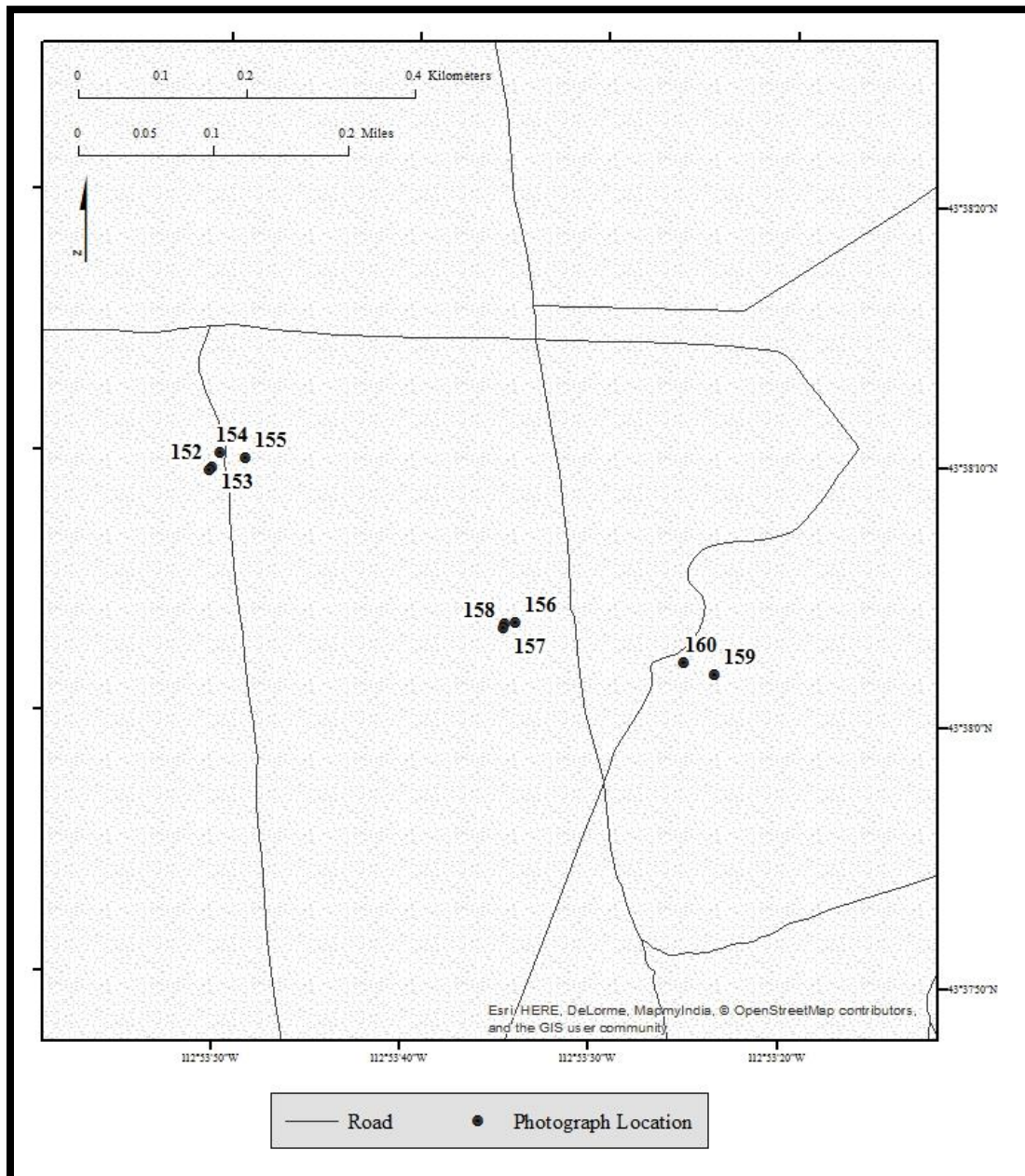




**Black and White Photographs, Location Map: B1**



**Black and White Photographs, Location Map: B2**



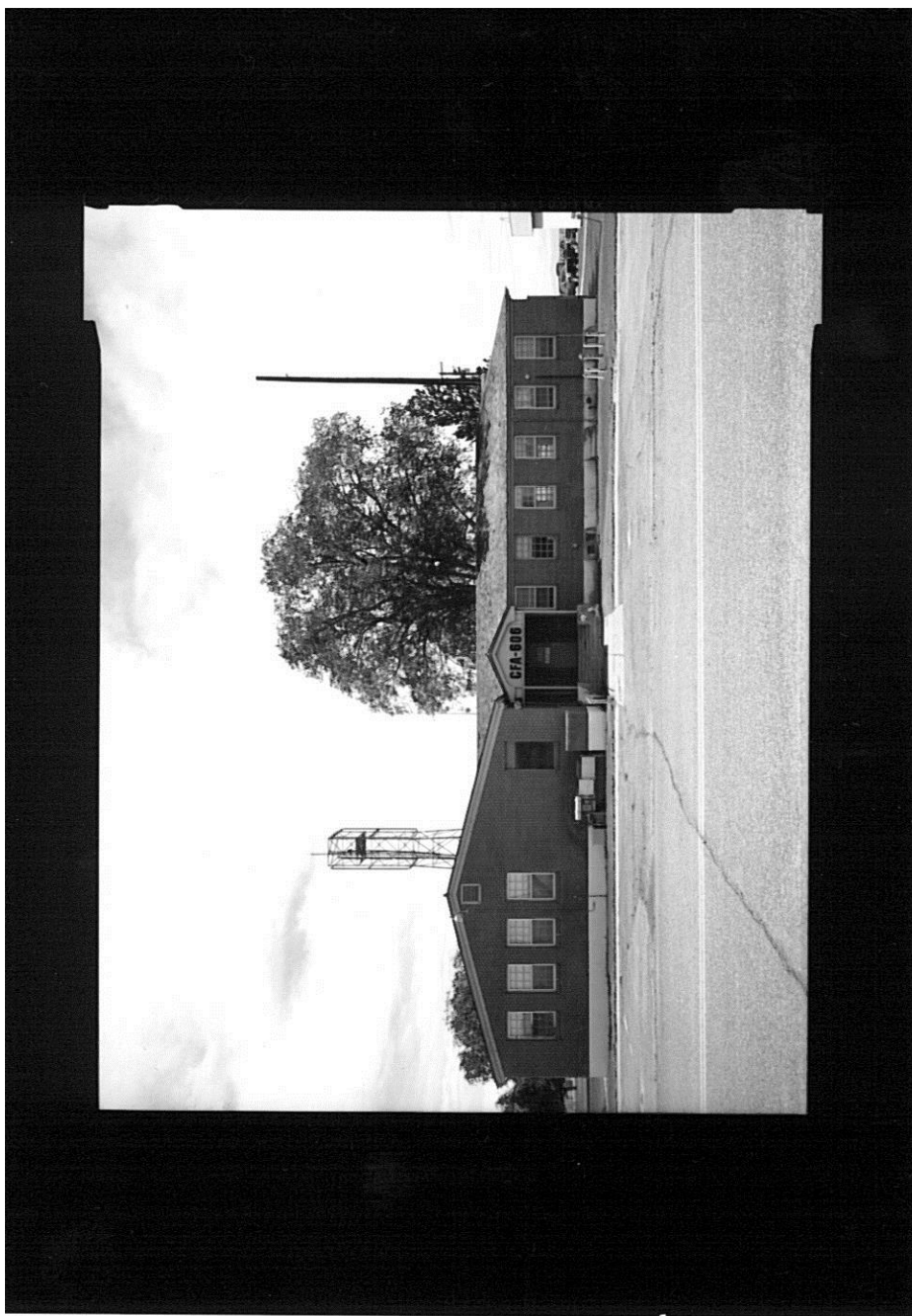
HISTORIC AMERICAN LANDSCAPE SURVEY  
SEE INDEX TO PHOTOGRAPHS FOR CAPTION

HALS No. ID-1-1



HISTORIC AMERICAN LANDSCAPE SURVEY  
SEE INDEX TO PHOTOGRAPHS FOR CAPTION

HALS No. ID-1-2





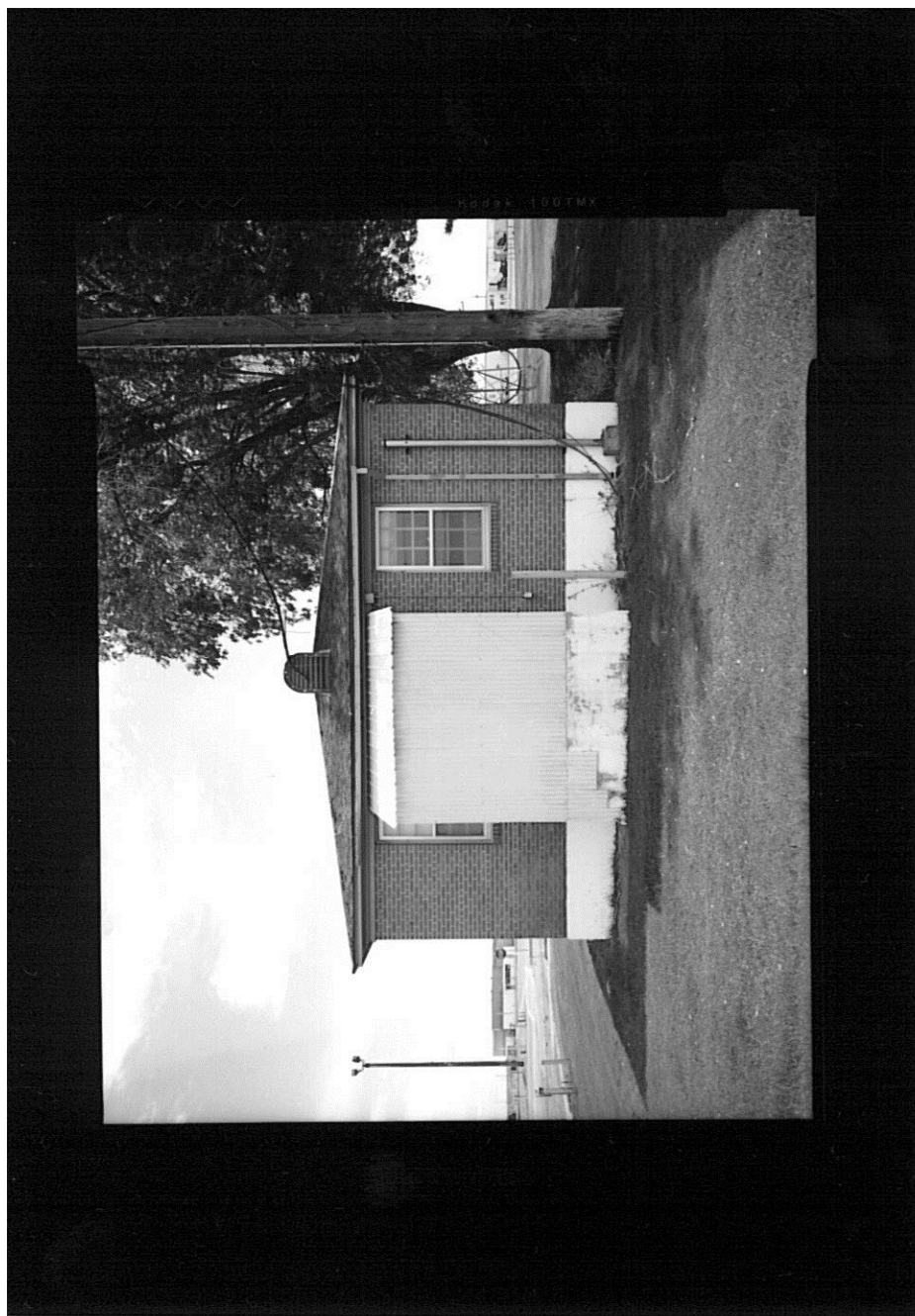
HISTORIC AMERICAN LANDSCAPE SURVEY  
SEE INDEX TO PHOTOGRAPHS FOR CAPTION

HALS No. ID-1-3



HISTORIC AMERICAN LANDSCAPE SURVEY  
SEE INDEX TO PHOTOGRAPHS FOR CAPTION

HALS No. ID-1-4



HISTORIC AMERICAN LANDSCAPE SURVEY  
SEE INDEX TO PHOTOGRAPHS FOR CAPTION

HALS No. ID-1-5



HISTORIC AMERICAN LANDSCAPE SURVEY  
SEE INDEX TO PHOTOGRAPHS FOR CAPTION

HALS No. ID-1-6





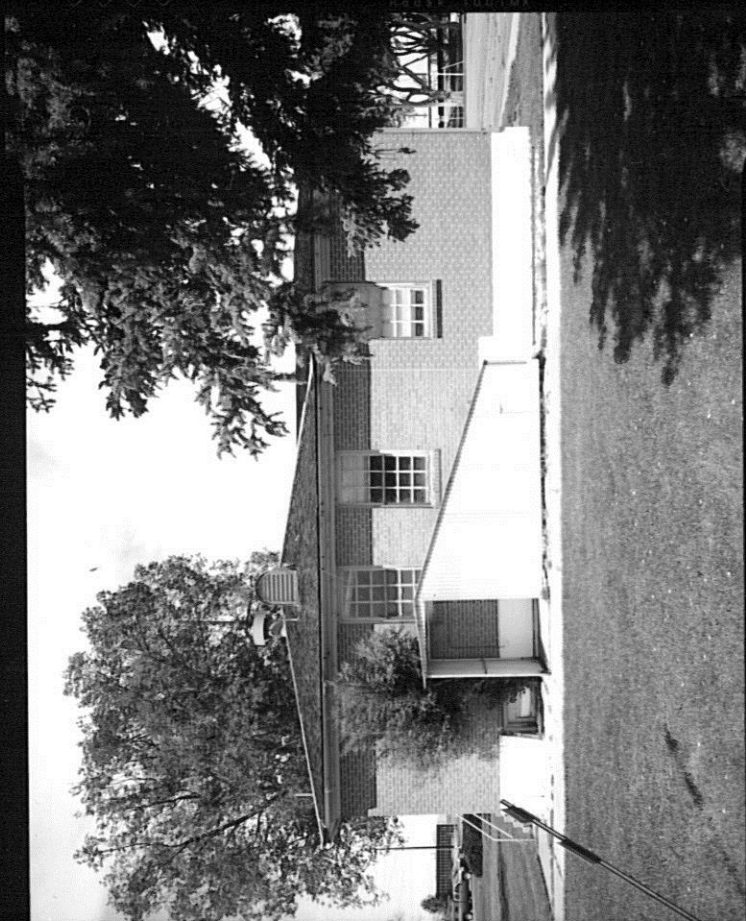
HISTORIC AMERICAN LANDSCAPE SURVEY  
SEE INDEX TO PHOTOGRAPHS FOR CAPTION

HALS No. ID-1-7



HISTORIC AMERICAN LANDSCAPE SURVEY  
SEE INDEX TO PHOTOGRAPHS FOR CAPTION

HALS No. ID-1-8



HISTORIC AMERICAN LANDSCAPE SURVEY  
SEE INDEX TO PHOTOGRAPHS FOR CAPTION

HALS No. ID-1-9



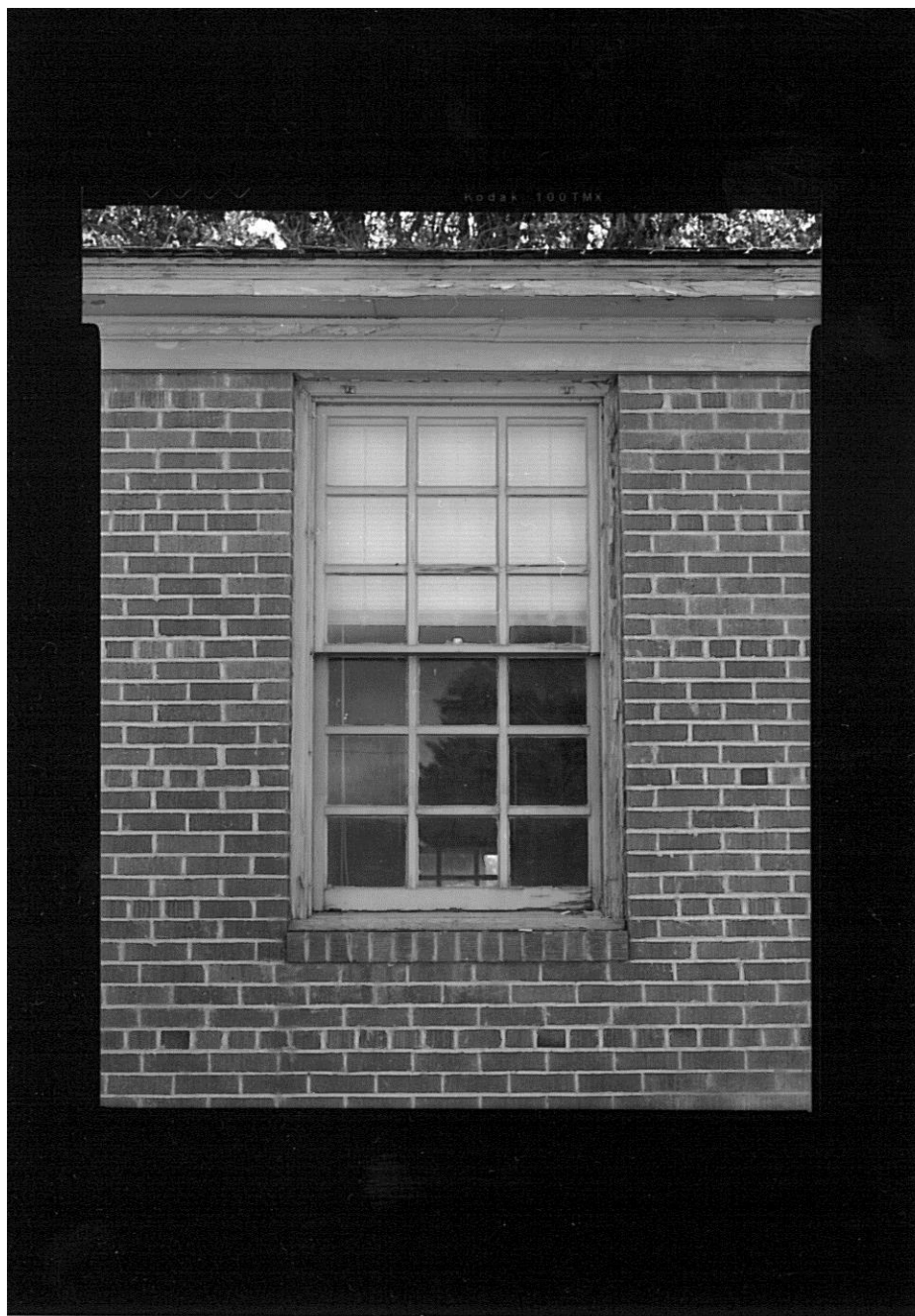
HISTORIC AMERICAN LANDSCAPE SURVEY  
SEE INDEX TO PHOTOGRAPHS FOR CAPTION

HALS No. ID-1-10



HISTORIC AMERICAN LANDSCAPE SURVEY  
SEE INDEX TO PHOTOGRAPHS FOR CAPTION

HALS No. ID-1-11





HISTORIC AMERICAN LANDSCAPE SURVEY  
SEE INDEX TO PHOTOGRAPHS FOR CAPTION

HALS No. ID-1-12



HISTORIC AMERICAN LANDSCAPE SURVEY  
SEE INDEX TO PHOTOGRAPHS FOR CAPTION

HALS No. ID-1-13



HISTORIC AMERICAN LANDSCAPE SURVEY  
SEE INDEX TO PHOTOGRAPHS FOR CAPTION

HALS No. ID-1-14





HISTORIC AMERICAN LANDSCAPE SURVEY  
SEE INDEX TO PHOTOGRAPHS FOR CAPTION

HALS No. ID-1-15



HISTORIC AMERICAN LANDSCAPE SURVEY  
SEE INDEX TO PHOTOGRAPHS FOR CAPTION

HALS No. ID-1-16



HISTORIC AMERICAN LANDSCAPE SURVEY  
SEE INDEX TO PHOTOGRAPHS FOR CAPTION

HALS No. ID-1-17



HISTORIC AMERICAN LANDSCAPE SURVEY  
SEE INDEX TO PHOTOGRAPHS FOR CAPTION

HALS No. ID-1-18



HISTORIC AMERICAN LANDSCAPE SURVEY  
SEE INDEX TO PHOTOGRAPHS FOR CAPTION

HALS No. ID-1-19





HISTORIC AMERICAN LANDSCAPE SURVEY  
SEE INDEX TO PHOTOGRAPHS FOR CAPTION

HALS No. ID-1-20



HISTORIC AMERICAN LANDSCAPE SURVEY  
SEE INDEX TO PHOTOGRAPHS FOR CAPTION

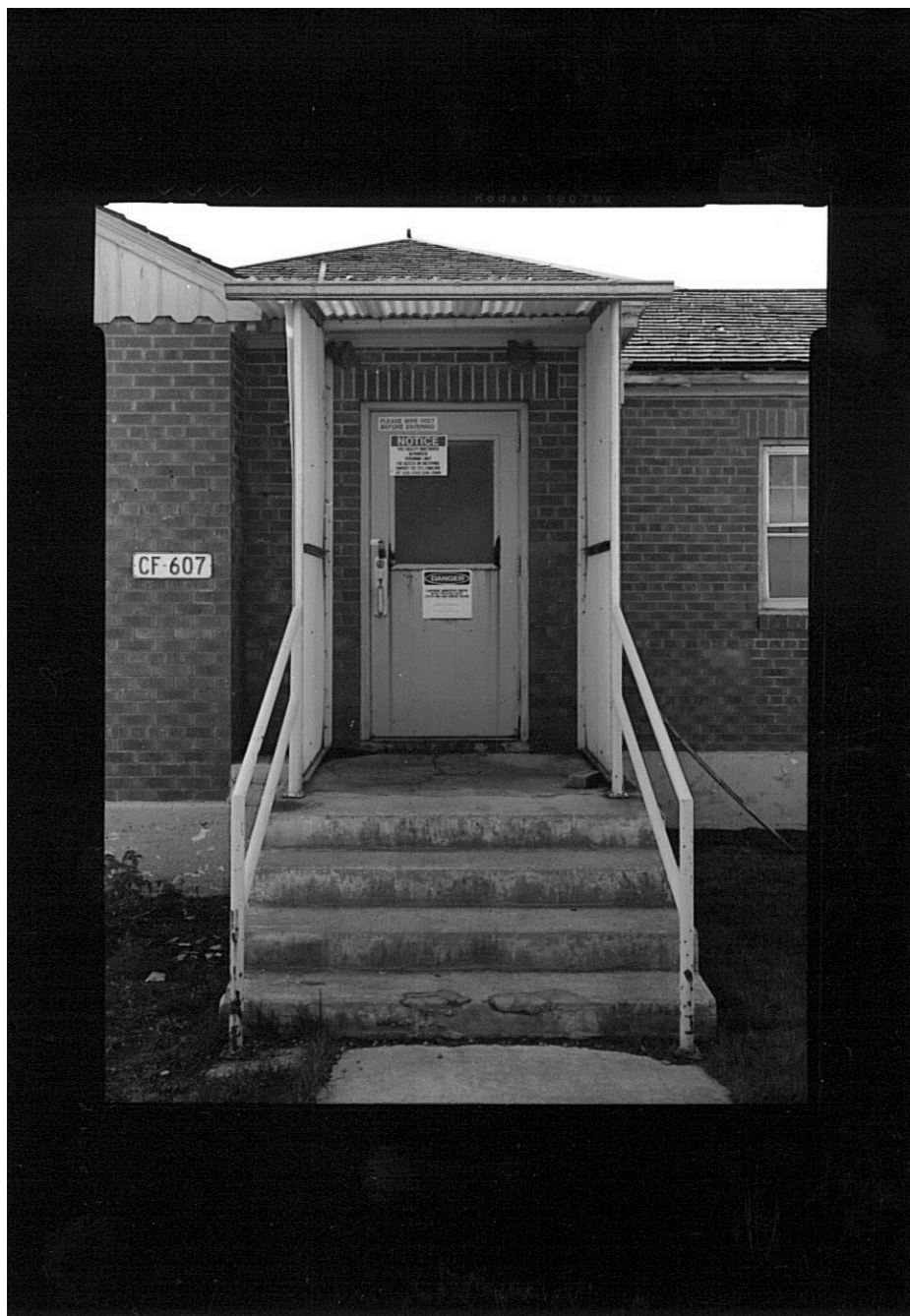
HALS No. ID-1-21





HISTORIC AMERICAN LANDSCAPE SURVEY  
SEE INDEX TO PHOTOGRAPHS FOR CAPTION

HALS No. ID-1-22



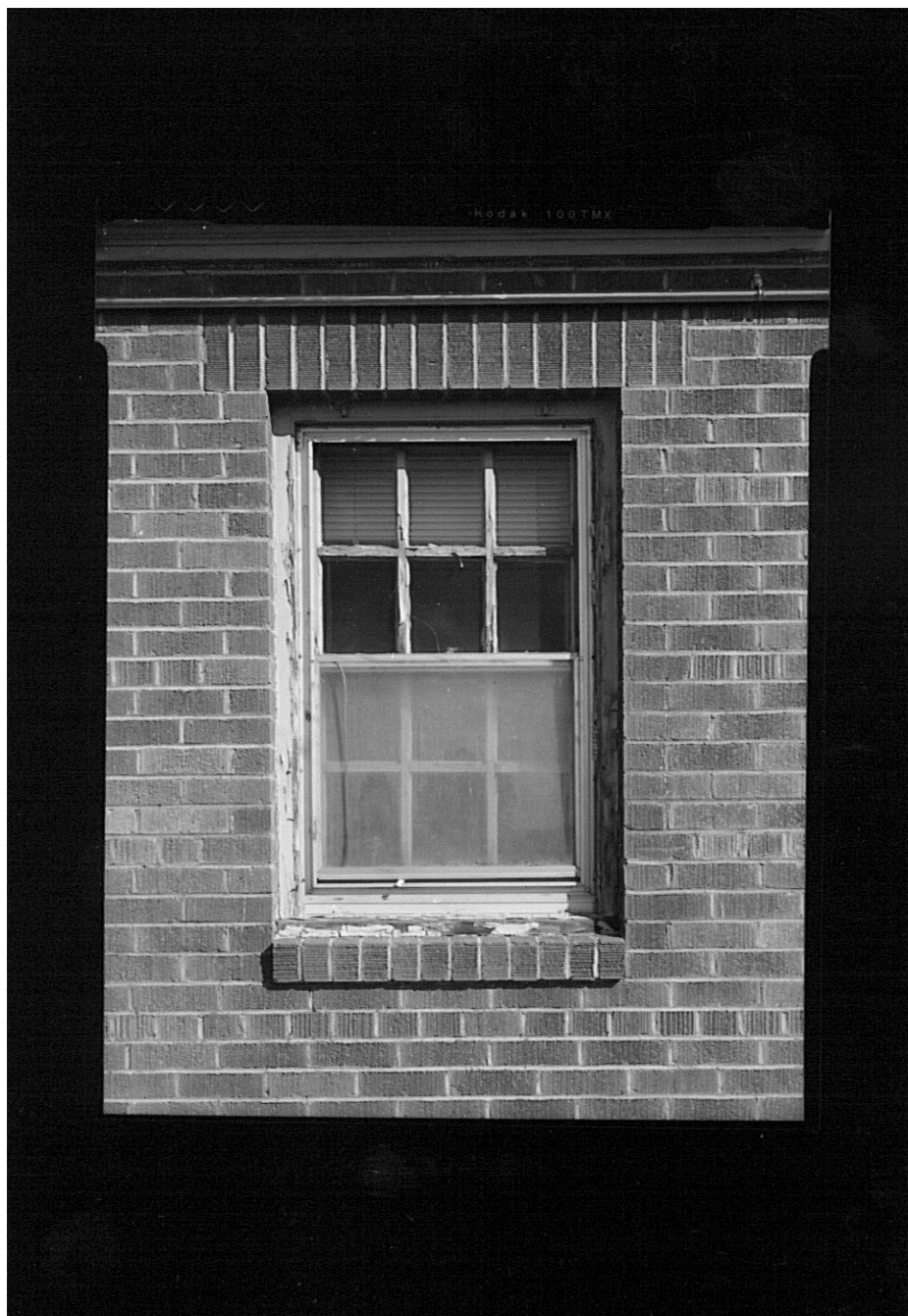
HISTORIC AMERICAN LANDSCAPE SURVEY  
SEE INDEX TO PHOTOGRAPHS FOR CAPTION

HALS No. ID-1-23



HISTORIC AMERICAN LANDSCAPE SURVEY  
SEE INDEX TO PHOTOGRAPHS FOR CAPTION

HALS No. ID-1-24



HISTORIC AMERICAN LANDSCAPE SURVEY  
SEE INDEX TO PHOTOGRAPHS FOR CAPTION

HALS No. ID-1-25



HISTORIC AMERICAN LANDSCAPE SURVEY  
SEE INDEX TO PHOTOGRAPHS FOR CAPTION

HALS No. ID-1-26





HISTORIC AMERICAN LANDSCAPE SURVEY  
SEE INDEX TO PHOTOGRAPHS FOR CAPTION

HALS No. ID-1-27



HISTORIC AMERICAN LANDSCAPE SURVEY  
SEE INDEX TO PHOTOGRAPHS FOR CAPTION

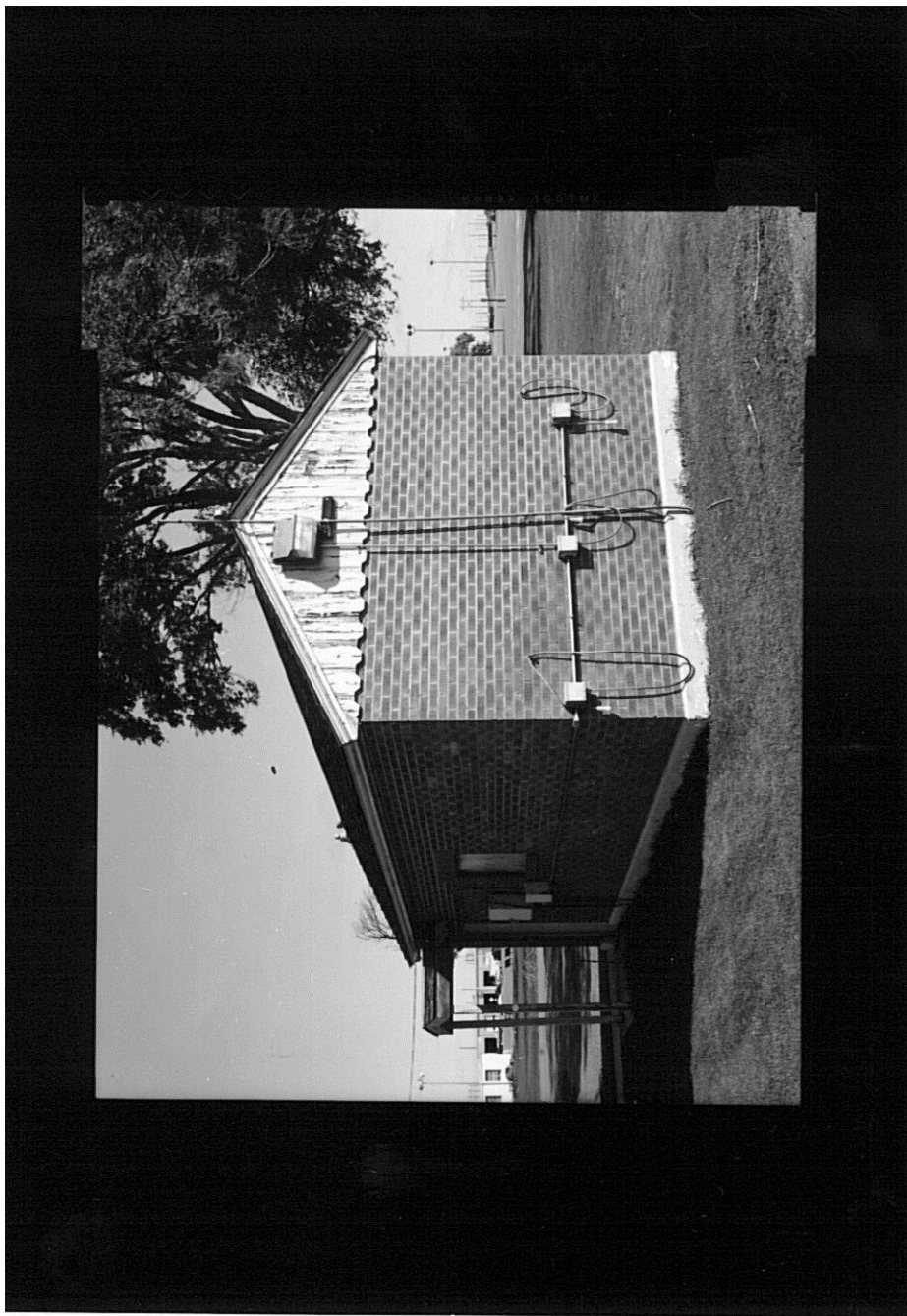
HALS No. ID-1-28





HISTORIC AMERICAN LANDSCAPE SURVEY  
SEE INDEX TO PHOTOGRAPHS FOR CAPTION

HALS No. ID-1-29



HISTORIC AMERICAN LANDSCAPE SURVEY  
SEE INDEX TO PHOTOGRAPHS FOR CAPTION

HALS No. ID-1-30



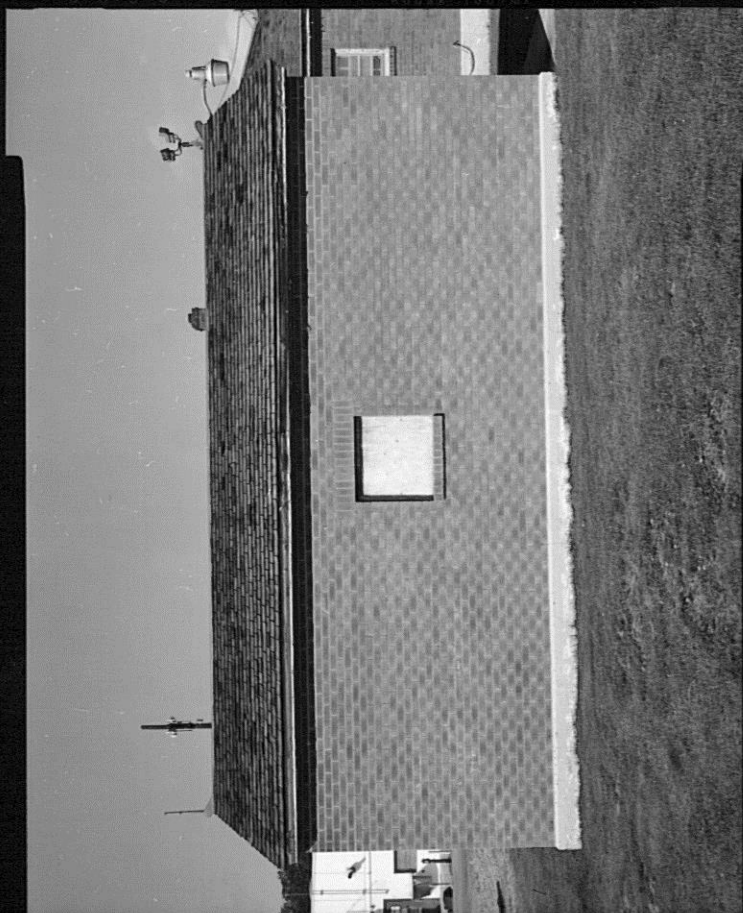
HISTORIC AMERICAN LANDSCAPE SURVEY  
SEE INDEX TO PHOTOGRAPHS FOR CAPTION

HALS No. ID-1-31



HISTORIC AMERICAN LANDSCAPE SURVEY  
SEE INDEX TO PHOTOGRAPHS FOR CAPTION

HALS No. ID-1-32



HISTORIC AMERICAN LANDSCAPE SURVEY  
SEE INDEX TO PHOTOGRAPHS FOR CAPTION

HALS No. ID-1-33





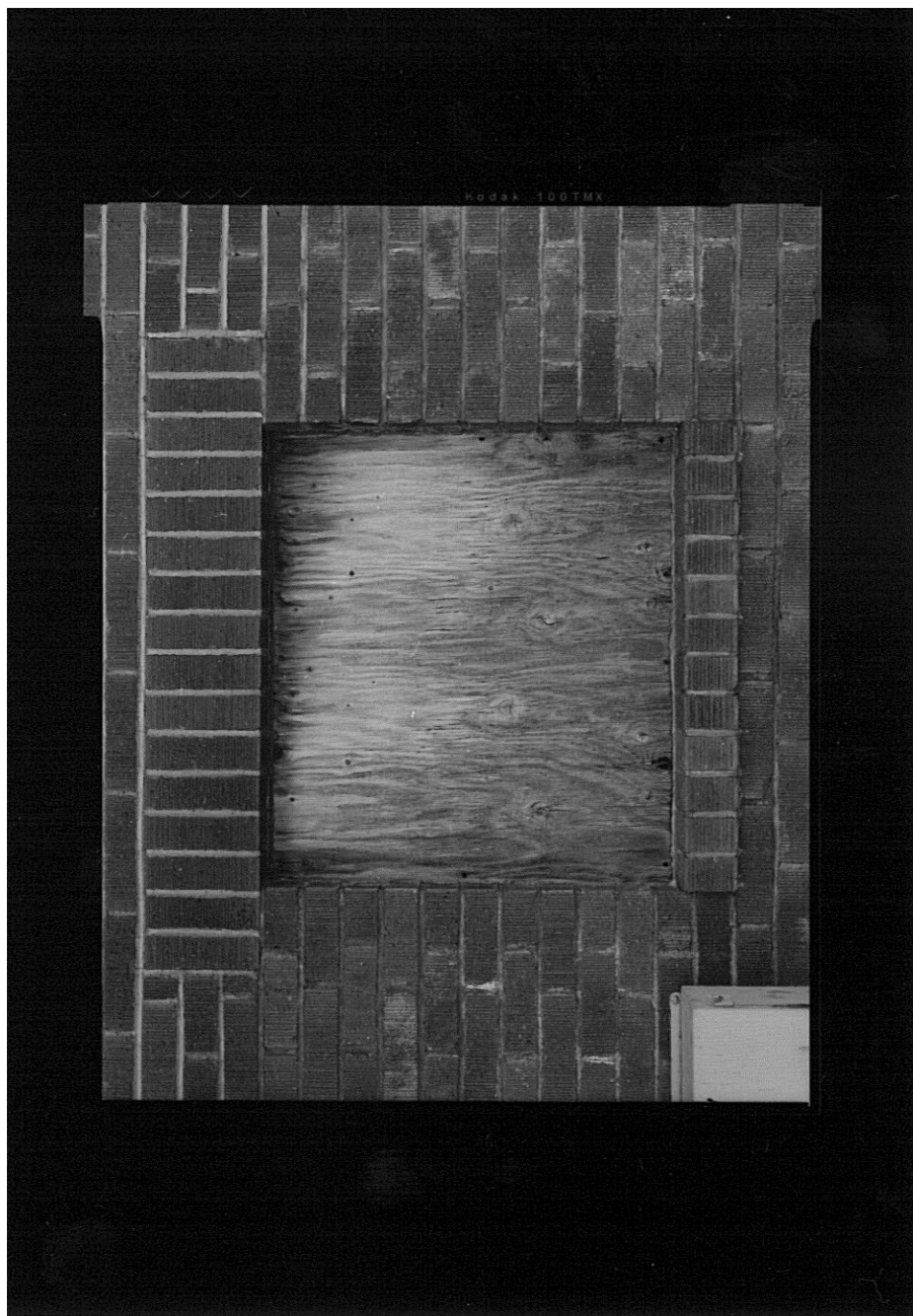
HISTORIC AMERICAN LANDSCAPE SURVEY  
SEE INDEX TO PHOTOGRAPHS FOR CAPTION

HALS No. ID-1-34



HISTORIC AMERICAN LANDSCAPE SURVEY  
SEE INDEX TO PHOTOGRAPHS FOR CAPTION

HALS No. ID-1-35





HISTORIC AMERICAN LANDSCAPE SURVEY  
SEE INDEX TO PHOTOGRAPHS FOR CAPTION

HALS No. ID-1-36



HISTORIC AMERICAN LANDSCAPE SURVEY  
SEE INDEX TO PHOTOGRAPHS FOR CAPTION

HALS No. ID-1-37



HISTORIC AMERICAN LANDSCAPE SURVEY  
SEE INDEX TO PHOTOGRAPHS FOR CAPTION

HALS No. ID-1-38



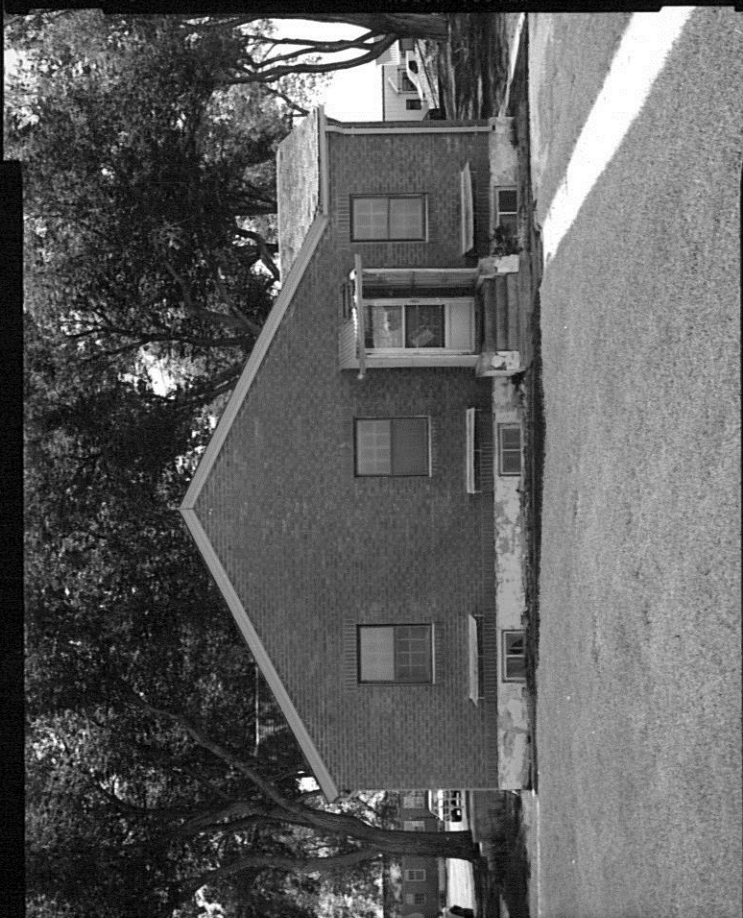
HISTORIC AMERICAN LANDSCAPE SURVEY  
SEE INDEX TO PHOTOGRAPHS FOR CAPTION

HALS No. ID-1-39



HISTORIC AMERICAN LANDSCAPE SURVEY  
SEE INDEX TO PHOTOGRAPHS FOR CAPTION

HALS No. ID-1-40





HISTORIC AMERICAN LANDSCAPE SURVEY  
SEE INDEX TO PHOTOGRAPHS FOR CAPTION

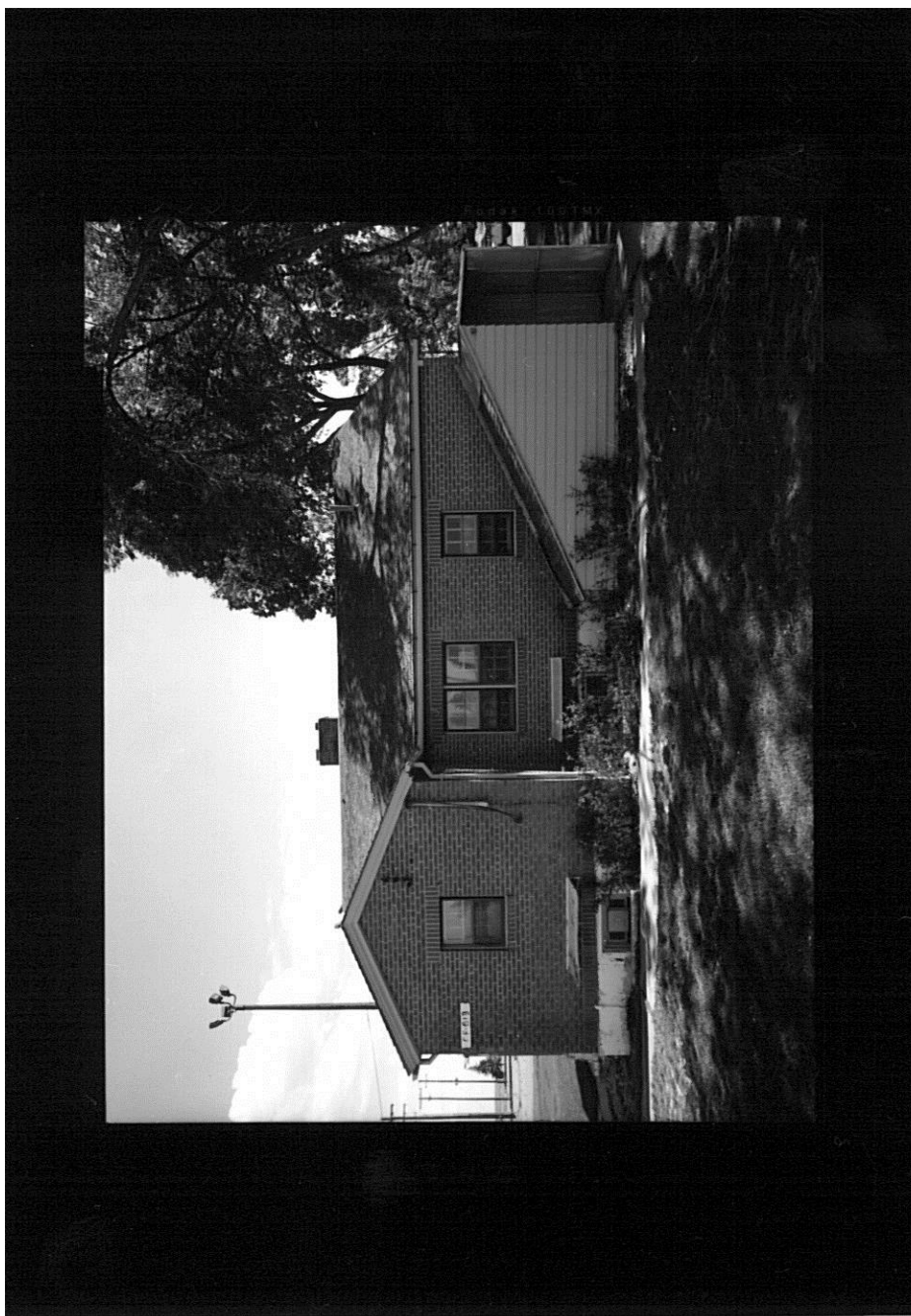
HALS No. ID-1-41





HISTORIC AMERICAN LANDSCAPE SURVEY  
SEE INDEX TO PHOTOGRAPHS FOR CAPTION

HALS No. ID-1-42



HISTORIC AMERICAN LANDSCAPE SURVEY  
SEE INDEX TO PHOTOGRAPHS FOR CAPTION

HALS No. ID-1-43



HISTORIC AMERICAN LANDSCAPE SURVEY  
SEE INDEX TO PHOTOGRAPHS FOR CAPTION

HALS No. ID-1-44



HISTORIC AMERICAN LANDSCAPE SURVEY  
SEE INDEX TO PHOTOGRAPHS FOR CAPTION

HALS No. ID-1-45



HISTORIC AMERICAN LANDSCAPE SURVEY  
SEE INDEX TO PHOTOGRAPHS FOR CAPTION

HALS No. ID-1-46





HISTORIC AMERICAN LANDSCAPE SURVEY  
SEE INDEX TO PHOTOGRAPHS FOR CAPTION

HALS No. ID-1-47





HISTORIC AMERICAN LANDSCAPE SURVEY  
SEE INDEX TO PHOTOGRAPHS FOR CAPTION

HALS No. ID-1-48



HISTORIC AMERICAN LANDSCAPE SURVEY  
SEE INDEX TO PHOTOGRAPHS FOR CAPTION

HALS No. ID-1-49



HISTORIC AMERICAN LANDSCAPE SURVEY  
SEE INDEX TO PHOTOGRAPHS FOR CAPTION

HALS No. ID-1-50



HISTORIC AMERICAN LANDSCAPE SURVEY  
SEE INDEX TO PHOTOGRAPHS FOR CAPTION

HALS No. ID-1-51



HISTORIC AMERICAN LANDSCAPE SURVEY  
SEE INDEX TO PHOTOGRAPHS FOR CAPTION

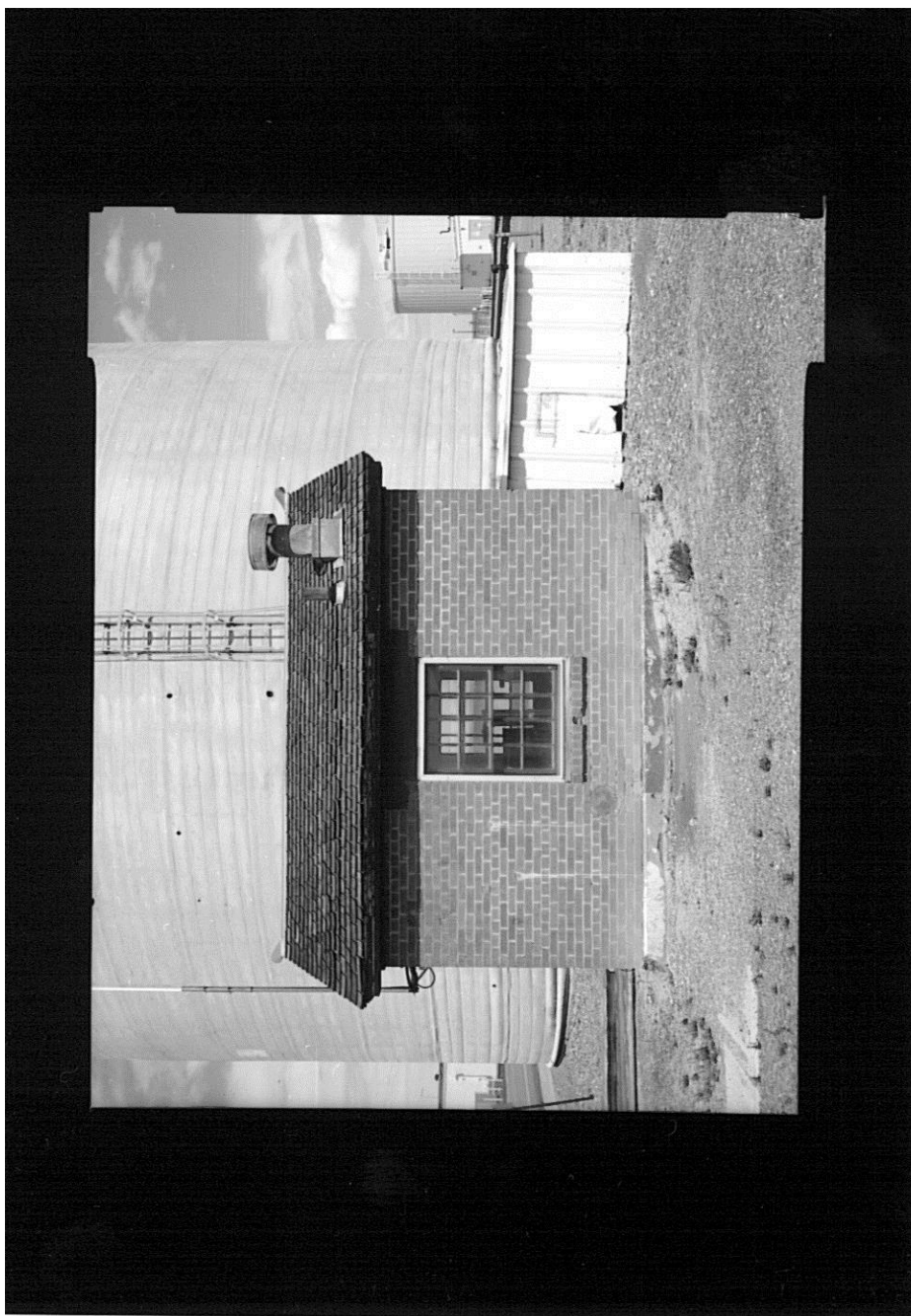
HALS No. ID-1-52





HISTORIC AMERICAN LANDSCAPE SURVEY  
SEE INDEX TO PHOTOGRAPHS FOR CAPTION

HALS No. ID-1-53





HISTORIC AMERICAN LANDSCAPE SURVEY  
SEE INDEX TO PHOTOGRAPHS FOR CAPTION

HALS No. ID-1-54



HISTORIC AMERICAN LANDSCAPE SURVEY  
SEE INDEX TO PHOTOGRAPHS FOR CAPTION

HALS No. ID-1-55



HISTORIC AMERICAN LANDSCAPE SURVEY  
SEE INDEX TO PHOTOGRAPHS FOR CAPTION

HALS No. ID-1-56



HISTORIC AMERICAN LANDSCAPE SURVEY  
SEE INDEX TO PHOTOGRAPHS FOR CAPTION

HALS No. ID-1-57



HISTORIC AMERICAN LANDSCAPE SURVEY  
SEE INDEX TO PHOTOGRAPHS FOR CAPTION

HALS No. ID-1-58





HISTORIC AMERICAN LANDSCAPE SURVEY  
SEE INDEX TO PHOTOGRAPHS FOR CAPTION

HALS No. ID-1-59





HISTORIC AMERICAN LANDSCAPE SURVEY  
SEE INDEX TO PHOTOGRAPHS FOR CAPTION

HALS No. ID-1-60



HISTORIC AMERICAN LANDSCAPE SURVEY  
SEE INDEX TO PHOTOGRAPHS FOR CAPTION

HALS No. ID-1-61



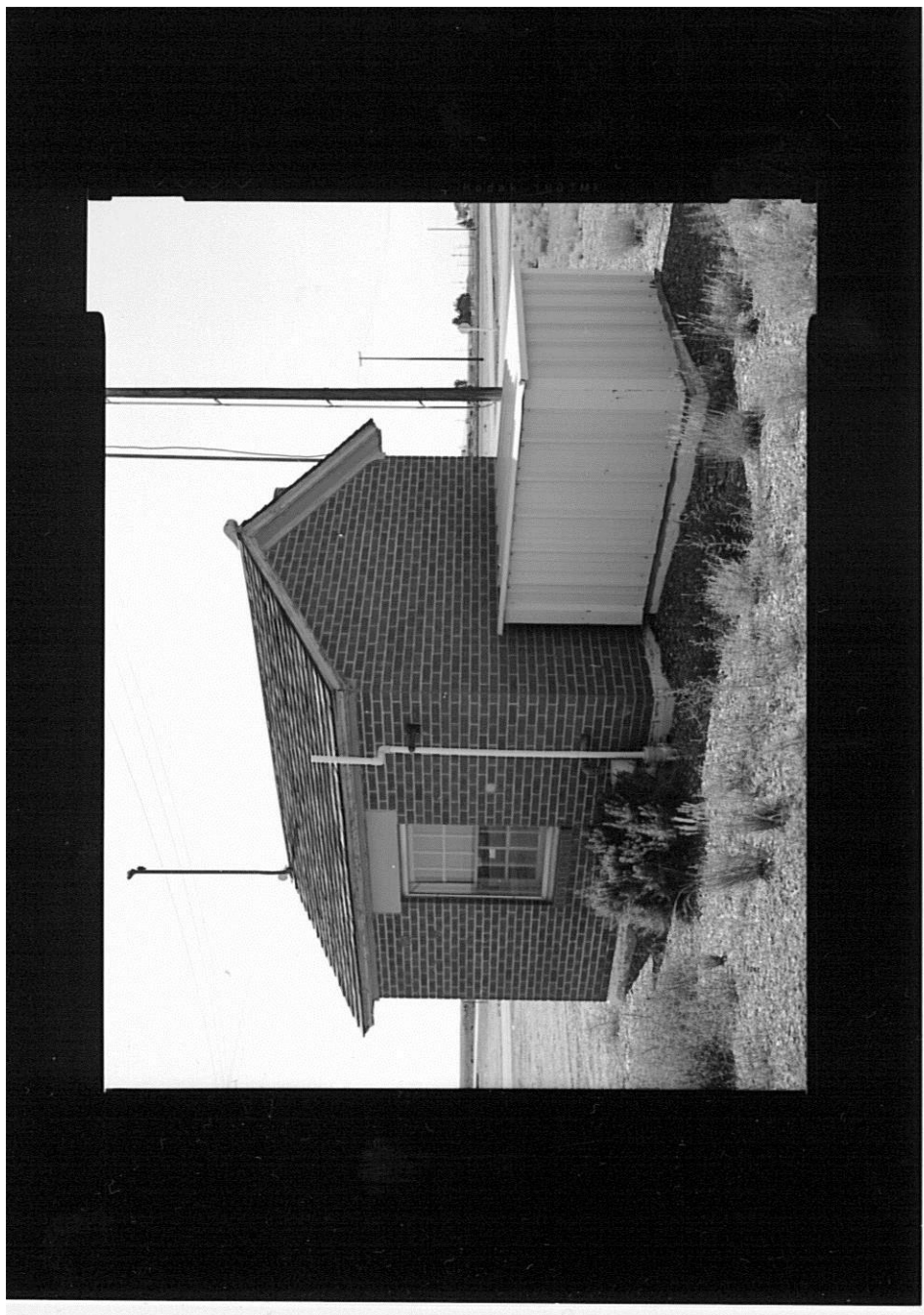
HISTORIC AMERICAN LANDSCAPE SURVEY  
SEE INDEX TO PHOTOGRAPHS FOR CAPTION

HALS No. ID-1-62



HISTORIC AMERICAN LANDSCAPE SURVEY  
SEE INDEX TO PHOTOGRAPHS FOR CAPTION

HALS No. ID-1-63



HISTORIC AMERICAN LANDSCAPE SURVEY  
SEE INDEX TO PHOTOGRAPHS FOR CAPTION

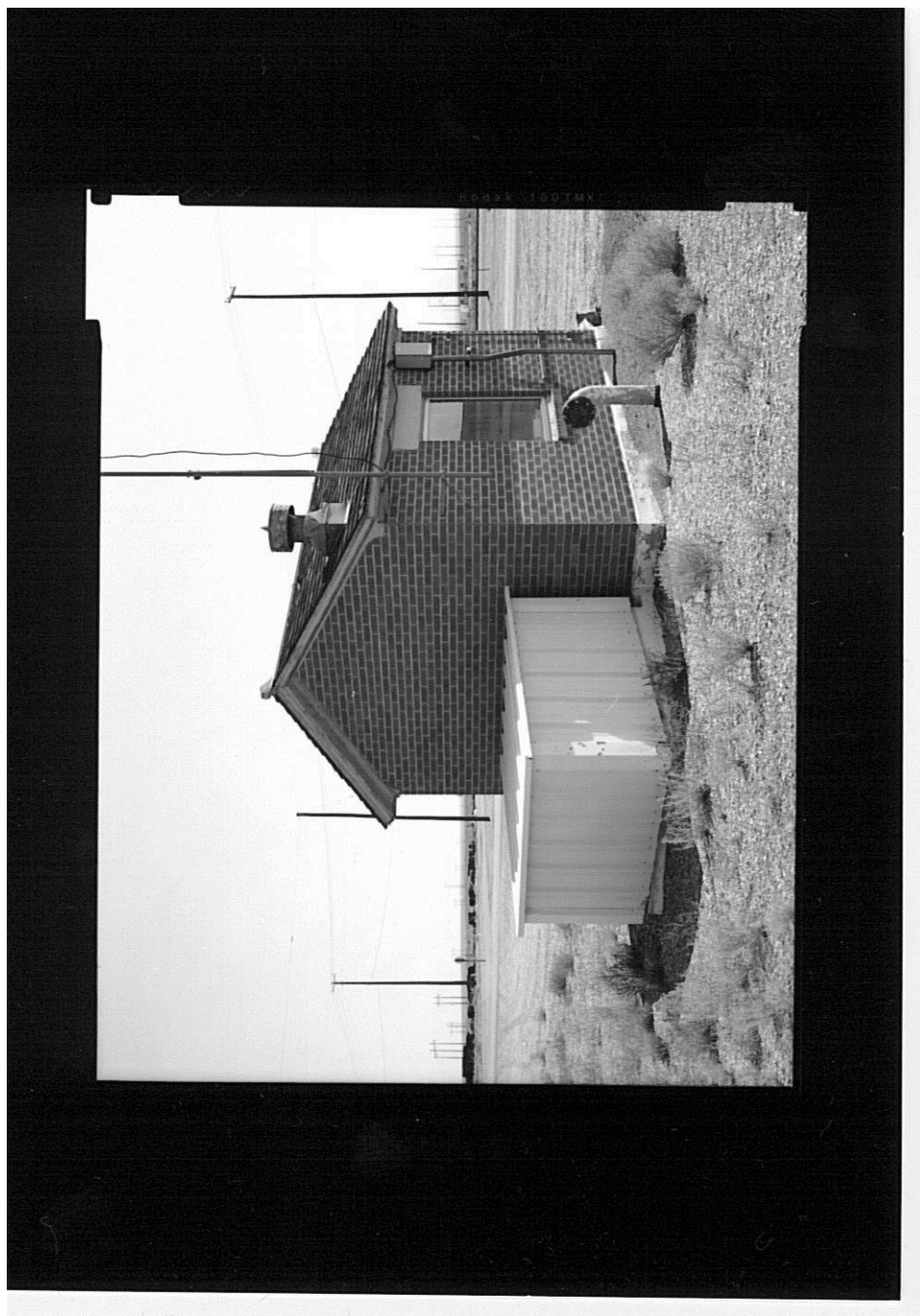
HALS No. ID-1-64





HISTORIC AMERICAN LANDSCAPE SURVEY  
SEE INDEX TO PHOTOGRAPHS FOR CAPTION

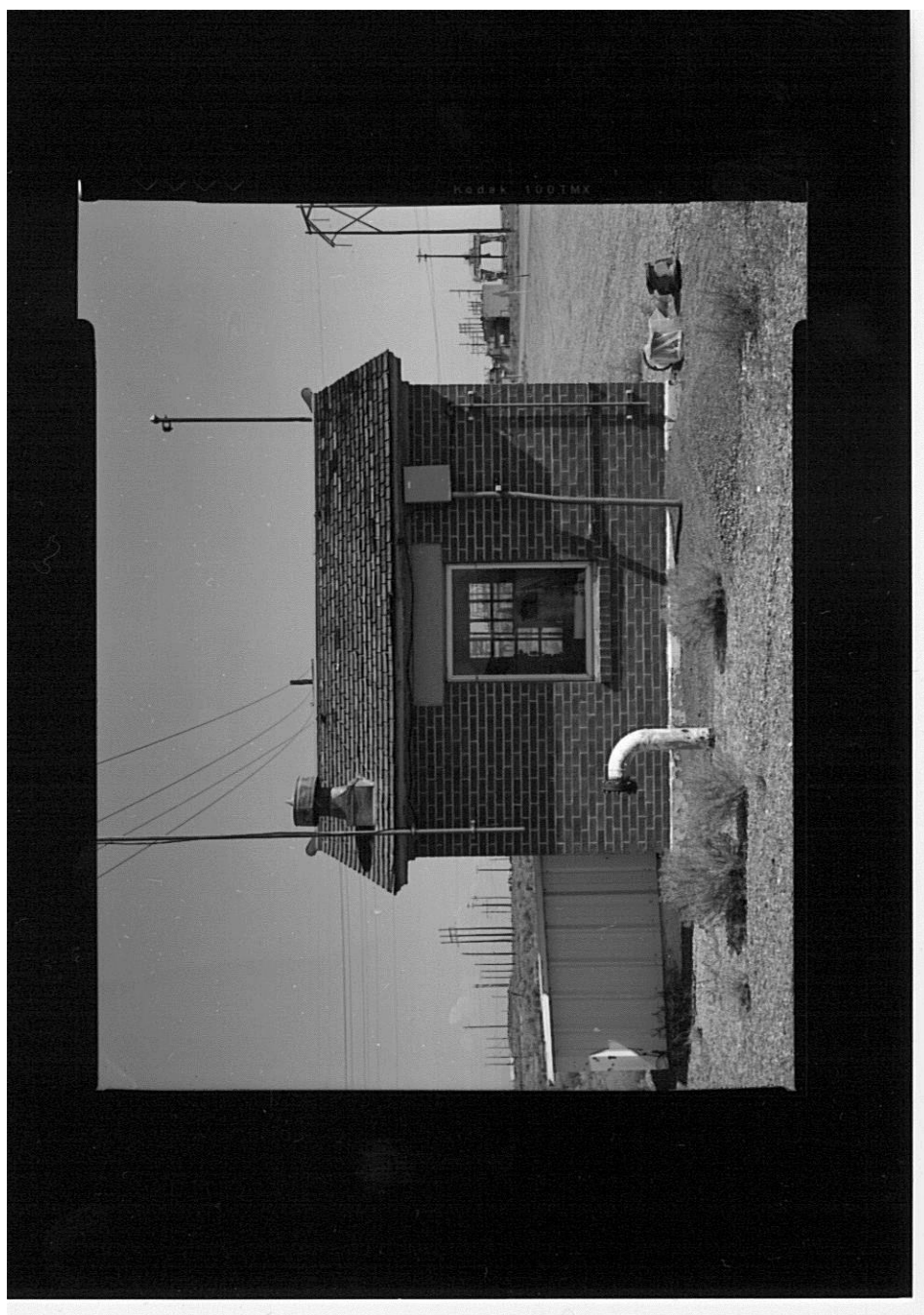
HALS No. ID-1-65





HISTORIC AMERICAN LANDSCAPE SURVEY  
SEE INDEX TO PHOTOGRAPHS FOR CAPTION

HALS No. ID-1-66



HISTORIC AMERICAN LANDSCAPE SURVEY  
SEE INDEX TO PHOTOGRAPHS FOR CAPTION

HALS No. ID-1-67



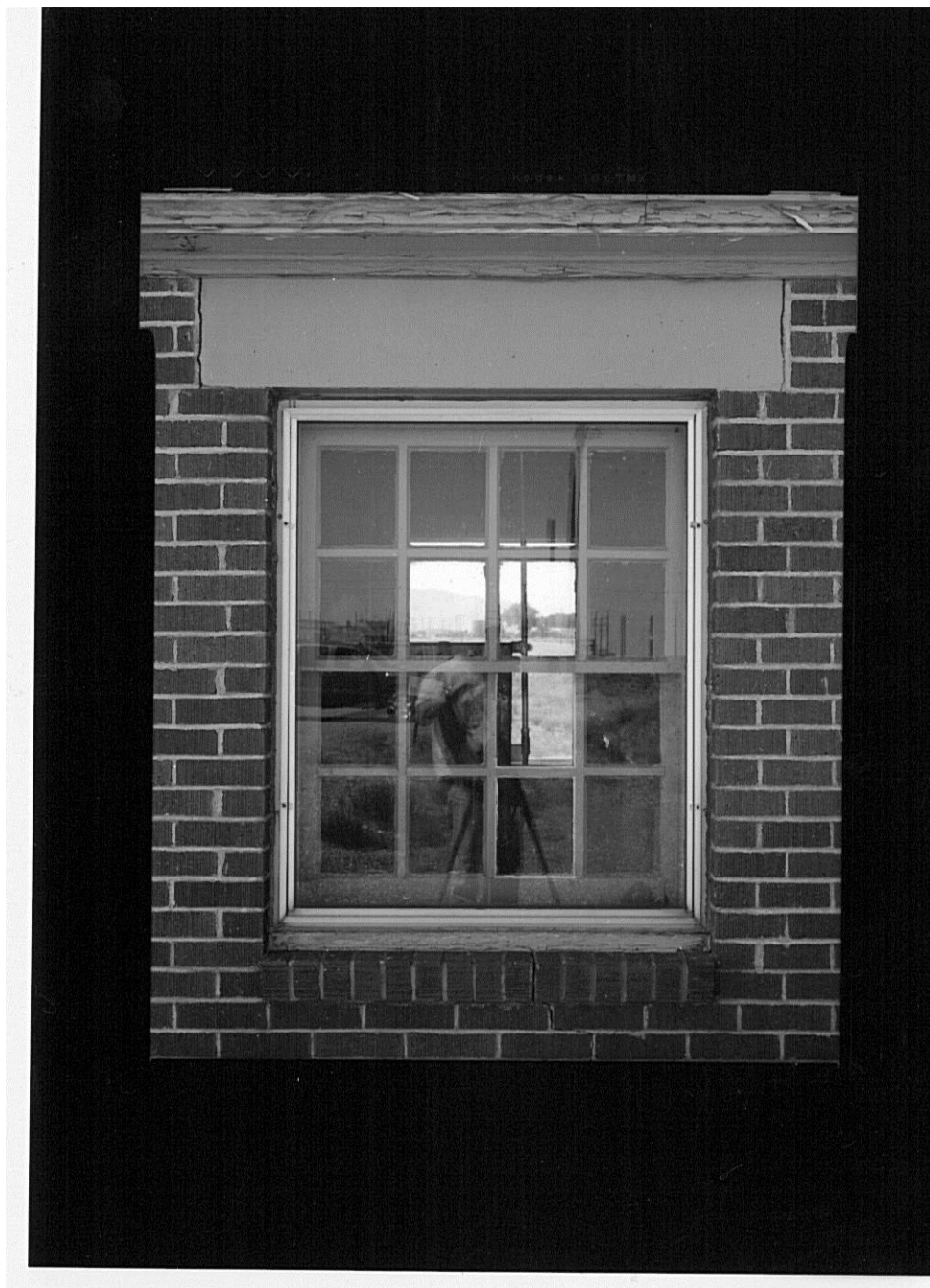
HISTORIC AMERICAN LANDSCAPE SURVEY  
SEE INDEX TO PHOTOGRAPHS FOR CAPTION

HALS No. ID-1-68



HISTORIC AMERICAN LANDSCAPE SURVEY  
SEE INDEX TO PHOTOGRAPHS FOR CAPTION

HALS No. ID-1-69



HISTORIC AMERICAN LANDSCAPE SURVEY  
SEE INDEX TO PHOTOGRAPHS FOR CAPTION

HALS No. ID-1-70





HISTORIC AMERICAN LANDSCAPE SURVEY  
SEE INDEX TO PHOTOGRAPHS FOR CAPTION

HALS No. ID-1-71





HISTORIC AMERICAN LANDSCAPE SURVEY  
SEE INDEX TO PHOTOGRAPHS FOR CAPTION

HALS No. ID-1-72



HISTORIC AMERICAN LANDSCAPE SURVEY  
SEE INDEX TO PHOTOGRAPHS FOR CAPTION

HALS No. ID-1-73



HISTORIC AMERICAN LANDSCAPE SURVEY  
SEE INDEX TO PHOTOGRAPHS FOR CAPTION

HALS No. ID-1-74



HISTORIC AMERICAN LANDSCAPE SURVEY  
SEE INDEX TO PHOTOGRAPHS FOR CAPTION

HALS No. ID-1-75



HISTORIC AMERICAN LANDSCAPE SURVEY  
SEE INDEX TO PHOTOGRAPHS FOR CAPTION

HALS No. ID-1-76





HISTORIC AMERICAN LANDSCAPE SURVEY  
SEE INDEX TO PHOTOGRAPHS FOR CAPTION

HALS No. ID-1-77





HISTORIC AMERICAN LANDSCAPE SURVEY  
SEE INDEX TO PHOTOGRAPHS FOR CAPTION

HALS No. ID-1-78



HISTORIC AMERICAN LANDSCAPE SURVEY  
SEE INDEX TO PHOTOGRAPHS FOR CAPTION

HALS No. ID-1-79



HISTORIC AMERICAN LANDSCAPE SURVEY  
SEE INDEX TO PHOTOGRAPHS FOR CAPTION

HALS No. ID-1-80



HISTORIC AMERICAN LANDSCAPE SURVEY  
SEE INDEX TO PHOTOGRAPHS FOR CAPTION

HALS No. ID-1-81



HISTORIC AMERICAN LANDSCAPE SURVEY  
SEE INDEX TO PHOTOGRAPHS FOR CAPTION

HALS No. ID-1-82





HISTORIC AMERICAN LANDSCAPE SURVEY  
SEE INDEX TO PHOTOGRAPHS FOR CAPTION

HALS No. ID-1-83





HISTORIC AMERICAN LANDSCAPE SURVEY  
SEE INDEX TO PHOTOGRAPHS FOR CAPTION

HALS No. ID-1-84



HISTORIC AMERICAN LANDSCAPE SURVEY  
SEE INDEX TO PHOTOGRAPHS FOR CAPTION

HALS No. ID-1-85



HISTORIC AMERICAN LANDSCAPE SURVEY  
SEE INDEX TO PHOTOGRAPHS FOR CAPTION

HALS No. ID-1-86



HISTORIC AMERICAN LANDSCAPE SURVEY  
SEE INDEX TO PHOTOGRAPHS FOR CAPTION

HALS No. ID-1-87



HISTORIC AMERICAN LANDSCAPE SURVEY  
SEE INDEX TO PHOTOGRAPHS FOR CAPTION

HALS No. ID-1-88





HISTORIC AMERICAN LANDSCAPE SURVEY  
SEE INDEX TO PHOTOGRAPHS FOR CAPTION

HALS No. ID-1-89





HISTORIC AMERICAN LANDSCAPE SURVEY  
SEE INDEX TO PHOTOGRAPHS FOR CAPTION

HALS No. ID-1-90



HISTORIC AMERICAN LANDSCAPE SURVEY  
SEE INDEX TO PHOTOGRAPHS FOR CAPTION

HALS No. ID-1-91



HISTORIC AMERICAN LANDSCAPE SURVEY  
SEE INDEX TO PHOTOGRAPHS FOR CAPTION

HALS No. ID-1-92



HISTORIC AMERICAN LANDSCAPE SURVEY  
SEE INDEX TO PHOTOGRAPHS FOR CAPTION

HALS No. ID-1-93



HISTORIC AMERICAN LANDSCAPE SURVEY  
SEE INDEX TO PHOTOGRAPHS FOR CAPTION

HALS No. ID-1-94





HISTORIC AMERICAN LANDSCAPE SURVEY  
SEE INDEX TO PHOTOGRAPHS FOR CAPTION

HALS No. ID-1-95





HISTORIC AMERICAN LANDSCAPE SURVEY  
SEE INDEX TO PHOTOGRAPHS FOR CAPTION

HALS No. ID-1-96



HISTORIC AMERICAN LANDSCAPE SURVEY  
SEE INDEX TO PHOTOGRAPHS FOR CAPTION

HALS No. ID-1-97



HISTORIC AMERICAN LANDSCAPE SURVEY  
SEE INDEX TO PHOTOGRAPHS FOR CAPTION

HALS No. ID-1-98



HISTORIC AMERICAN LANDSCAPE SURVEY  
SEE INDEX TO PHOTOGRAPHS FOR CAPTION

HALS No. ID-1-99



HISTORIC AMERICAN LANDSCAPE SURVEY  
SEE INDEX TO PHOTOGRAPHS FOR CAPTION

HALS No. ID-1-100





HISTORIC AMERICAN LANDSCAPE SURVEY  
SEE INDEX TO PHOTOGRAPHS FOR CAPTION

HALS No. ID-1-101





HISTORIC AMERICAN LANDSCAPE SURVEY  
SEE INDEX TO PHOTOGRAPHS FOR CAPTION

HALS No. ID-1-102



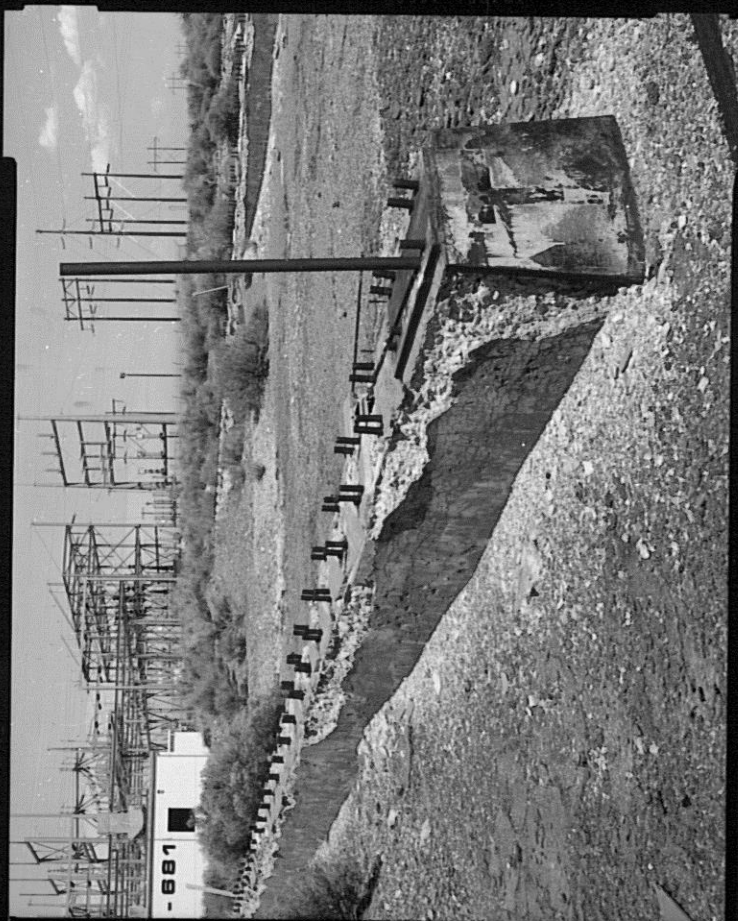
HISTORIC AMERICAN LANDSCAPE SURVEY  
SEE INDEX TO PHOTOGRAPHS FOR CAPTION

HALS No. ID-1-103



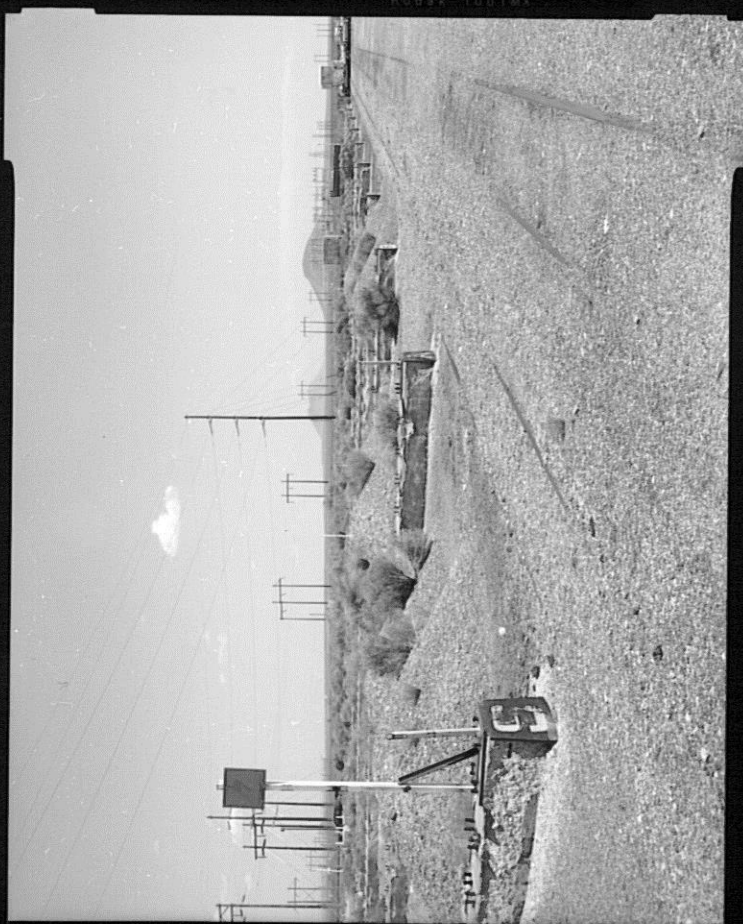
HISTORIC AMERICAN LANDSCAPE SURVEY  
SEE INDEX TO PHOTOGRAPHS FOR CAPTION

HALS No. ID-1-104



HISTORIC AMERICAN LANDSCAPE SURVEY  
SEE INDEX TO PHOTOGRAPHS FOR CAPTION

HALS No. ID-1-105



HISTORIC AMERICAN LANDSCAPE SURVEY  
SEE INDEX TO PHOTOGRAPHS FOR CAPTION

HALS No. ID-1-106





HISTORIC AMERICAN LANDSCAPE SURVEY  
SEE INDEX TO PHOTOGRAPHS FOR CAPTION

HALS No. ID-1-107





HISTORIC AMERICAN LANDSCAPE SURVEY  
SEE INDEX TO PHOTOGRAPHS FOR CAPTION

HALS No. ID-1-108



HISTORIC AMERICAN LANDSCAPE SURVEY  
SEE INDEX TO PHOTOGRAPHS FOR CAPTION

HALS No. ID-1-109



HISTORIC AMERICAN LANDSCAPE SURVEY  
SEE INDEX TO PHOTOGRAPHS FOR CAPTION

HALS No. ID-1-110



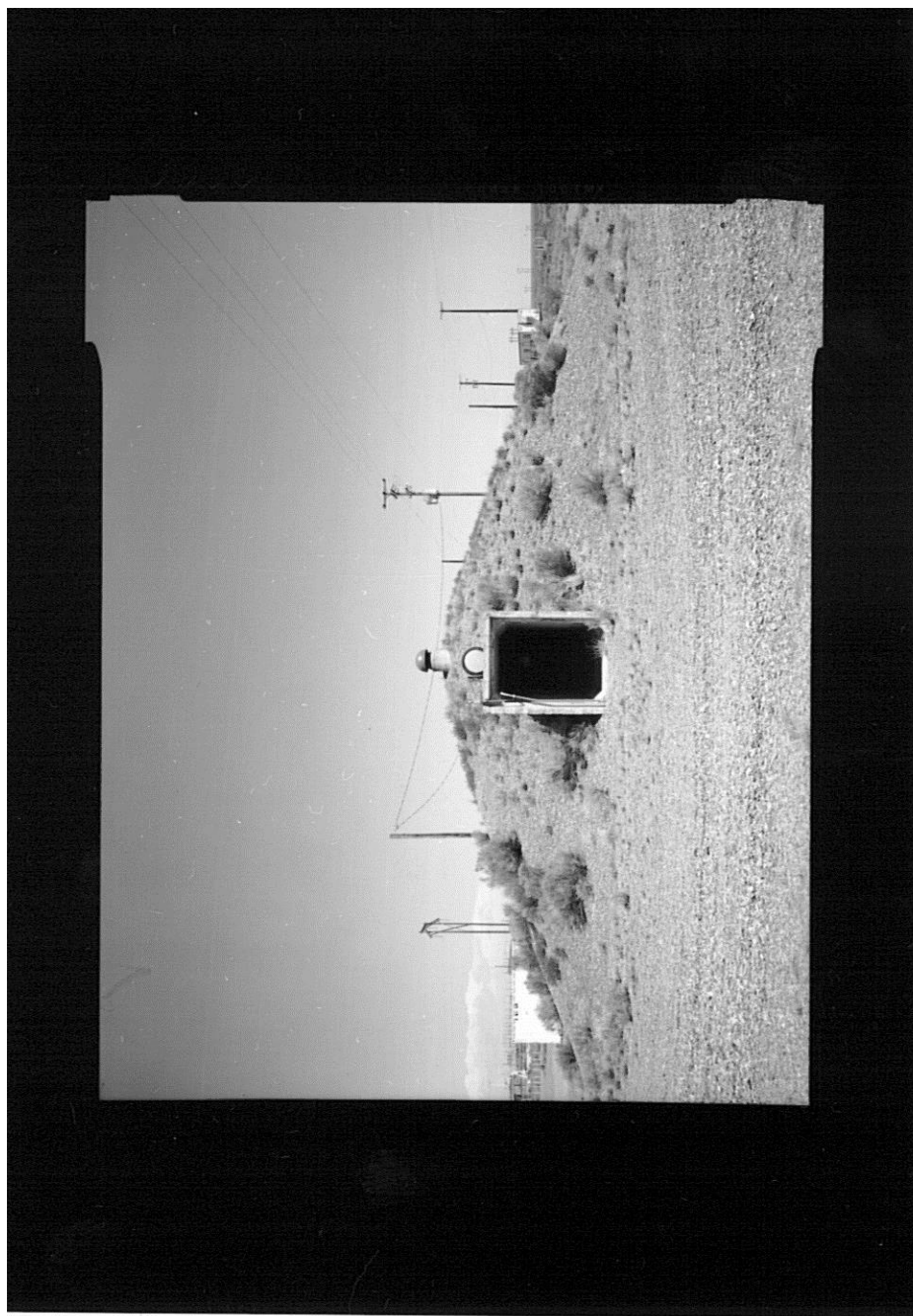
HISTORIC AMERICAN LANDSCAPE SURVEY  
SEE INDEX TO PHOTOGRAPHS FOR CAPTION

HALS No. ID-1-111



HISTORIC AMERICAN LANDSCAPE SURVEY  
SEE INDEX TO PHOTOGRAPHS FOR CAPTION

HALS No. ID-1-112





HISTORIC AMERICAN LANDSCAPE SURVEY  
SEE INDEX TO PHOTOGRAPHS FOR CAPTION

HALS No. ID-1-113





HISTORIC AMERICAN LANDSCAPE SURVEY  
SEE INDEX TO PHOTOGRAPHS FOR CAPTION

HALS No. ID-1-114



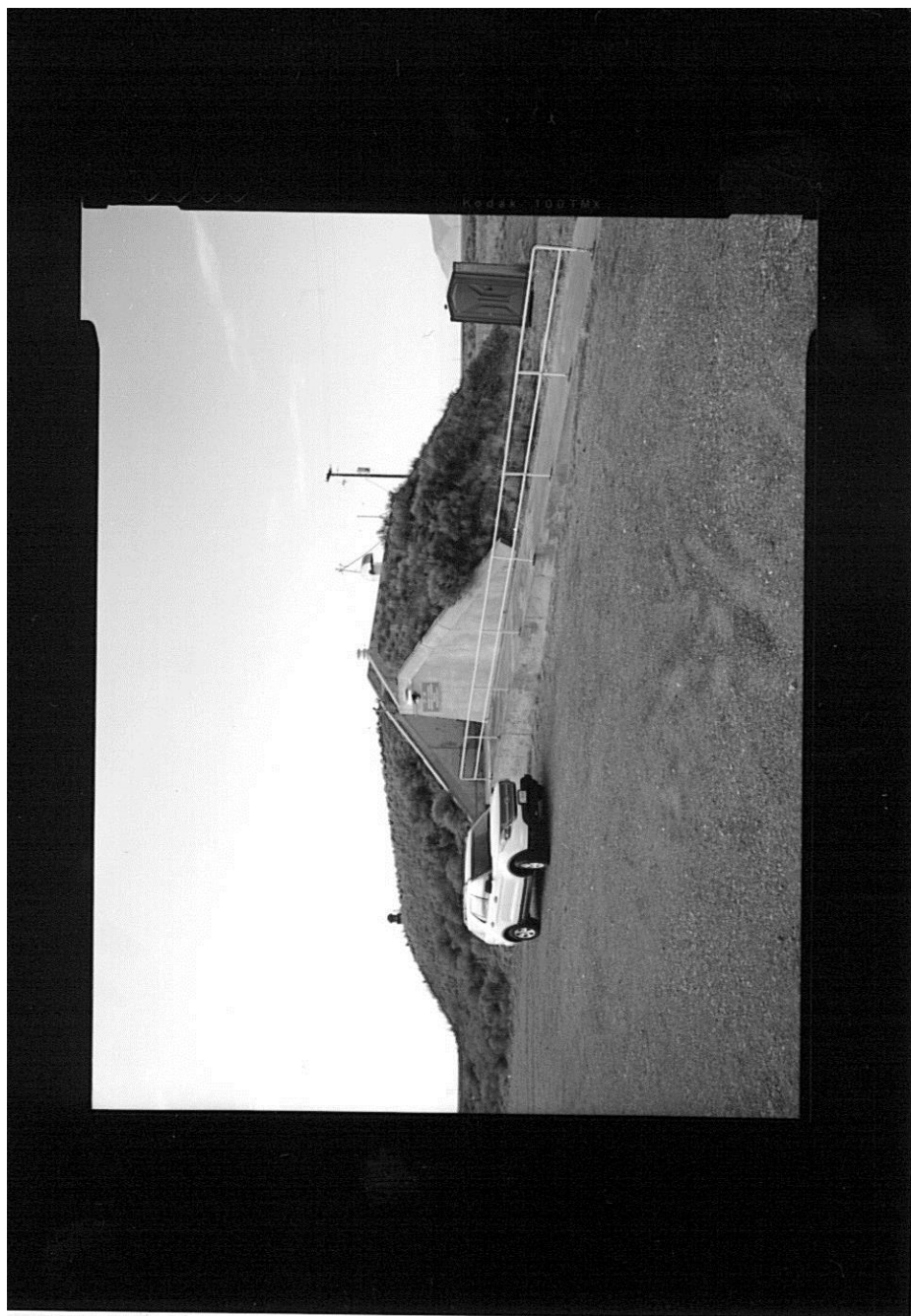
HISTORIC AMERICAN LANDSCAPE SURVEY  
SEE INDEX TO PHOTOGRAPHS FOR CAPTION

HALS No. ID-1-115



HISTORIC AMERICAN LANDSCAPE SURVEY  
SEE INDEX TO PHOTOGRAPHS FOR CAPTION

HALS No. ID-1-116



HISTORIC AMERICAN LANDSCAPE SURVEY  
SEE INDEX TO PHOTOGRAPHS FOR CAPTION

HALS No. ID-1-117



HISTORIC AMERICAN LANDSCAPE SURVEY  
SEE INDEX TO PHOTOGRAPHS FOR CAPTION

HALS No. ID-1-118





HISTORIC AMERICAN LANDSCAPE SURVEY  
SEE INDEX TO PHOTOGRAPHS FOR CAPTION

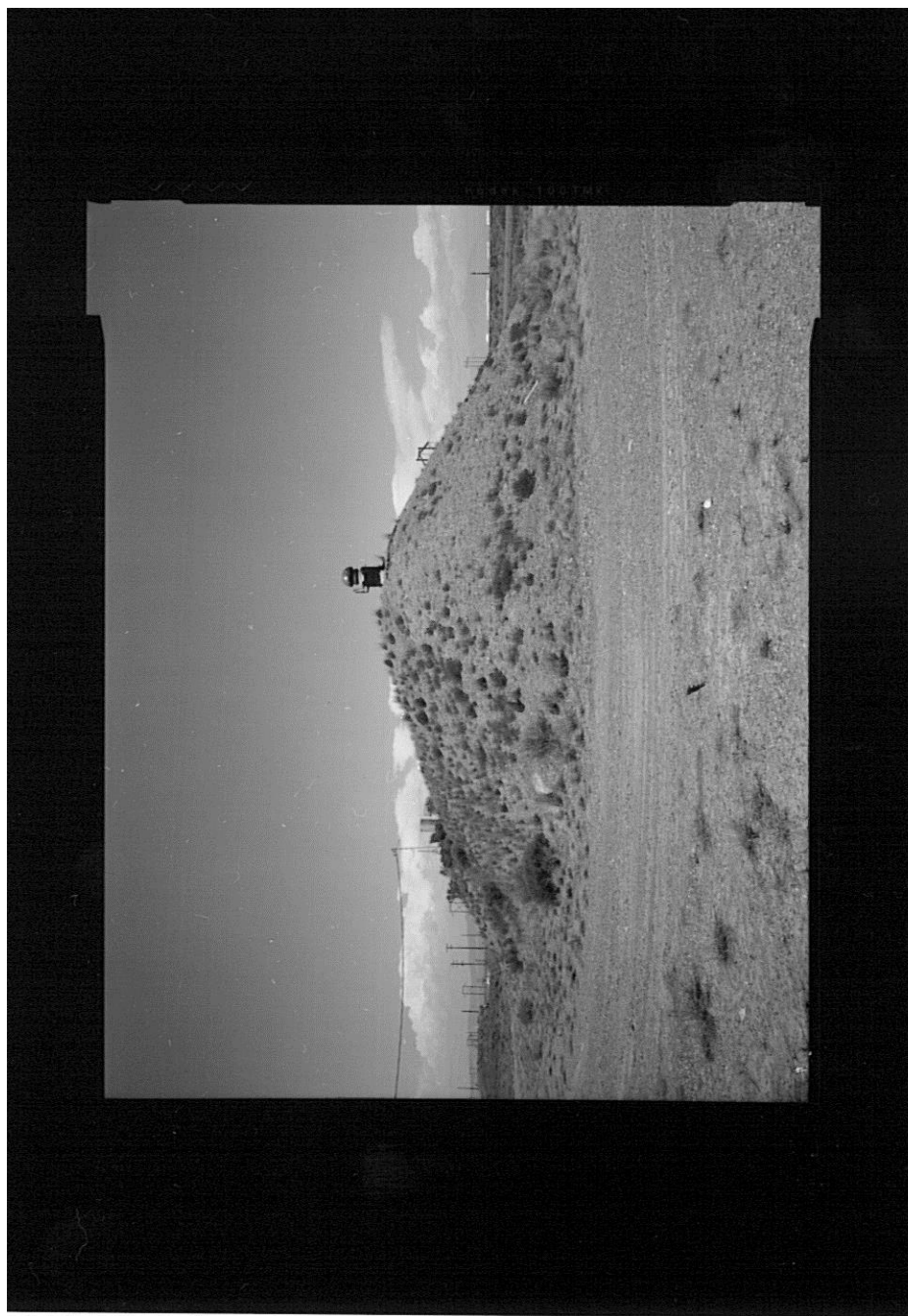
HALS No. ID-1-119





HISTORIC AMERICAN LANDSCAPE SURVEY  
SEE INDEX TO PHOTOGRAPHS FOR CAPTION

HALS No. ID-1-120



HISTORIC AMERICAN LANDSCAPE SURVEY  
SEE INDEX TO PHOTOGRAPHS FOR CAPTION

HALS No. ID-1-121



HISTORIC AMERICAN LANDSCAPE SURVEY  
SEE INDEX TO PHOTOGRAPHS FOR CAPTION

HALS No. ID-1-122



HISTORIC AMERICAN LANDSCAPE SURVEY  
SEE INDEX TO PHOTOGRAPHS FOR CAPTION

HALS No. ID-1-123



HISTORIC AMERICAN LANDSCAPE SURVEY  
SEE INDEX TO PHOTOGRAPHS FOR CAPTION

HALS No. ID-1-124





HISTORIC AMERICAN LANDSCAPE SURVEY  
SEE INDEX TO PHOTOGRAPHS FOR CAPTION

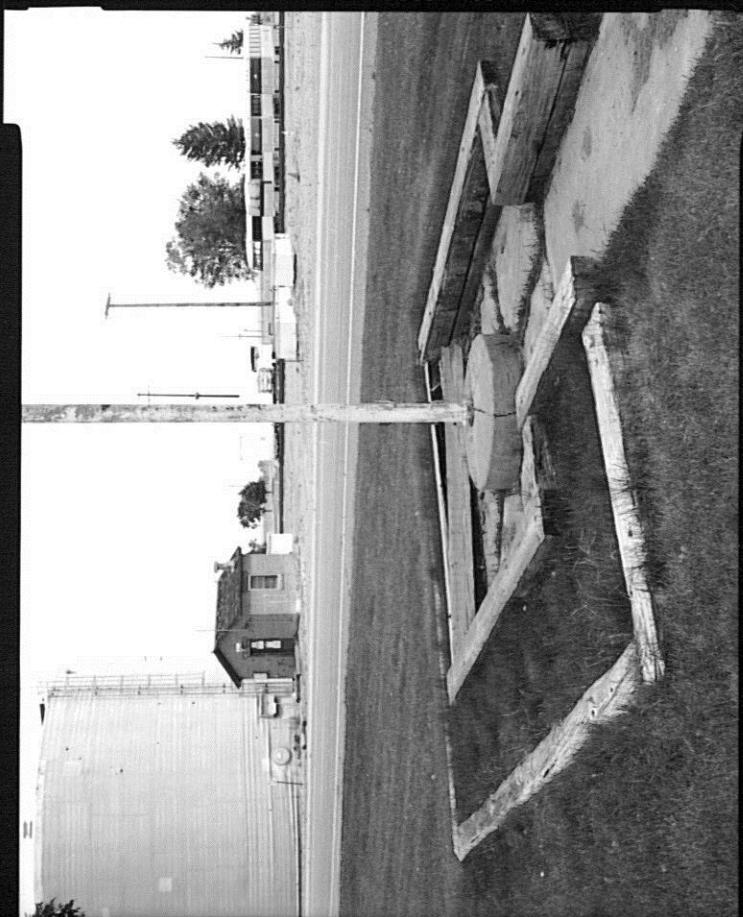
HALS No. ID-1-125





HISTORIC AMERICAN LANDSCAPE SURVEY  
SEE INDEX TO PHOTOGRAPHS FOR CAPTION

HALS No. ID-1-126



HISTORIC AMERICAN LANDSCAPE SURVEY  
SEE INDEX TO PHOTOGRAPHS FOR CAPTION

HALS No. ID-1-127



HISTORIC AMERICAN LANDSCAPE SURVEY  
SEE INDEX TO PHOTOGRAPHS FOR CAPTION

HALS No. ID-1-128



HISTORIC AMERICAN LANDSCAPE SURVEY  
SEE INDEX TO PHOTOGRAPHS FOR CAPTION

HALS No. ID-1-129



HISTORIC AMERICAN LANDSCAPE SURVEY  
SEE INDEX TO PHOTOGRAPHS FOR CAPTION

HALS No. ID-1-130





HISTORIC AMERICAN LANDSCAPE SURVEY  
SEE INDEX TO PHOTOGRAPHS FOR CAPTION

HALS No. ID-1-131





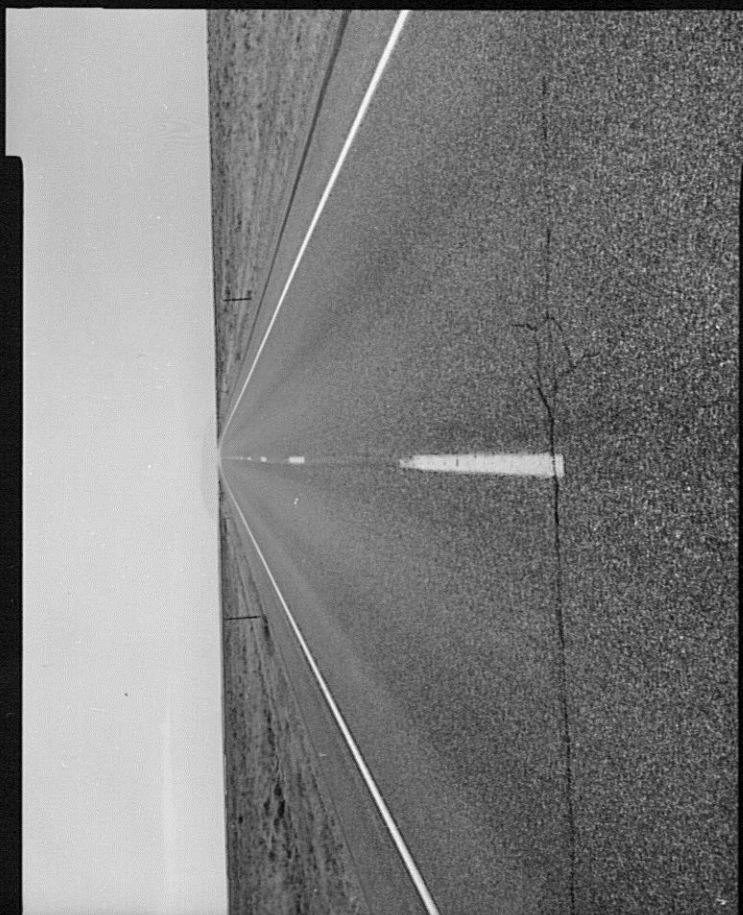
HISTORIC AMERICAN LANDSCAPE SURVEY  
SEE INDEX TO PHOTOGRAPHS FOR CAPTION

HALS No. ID-1-132



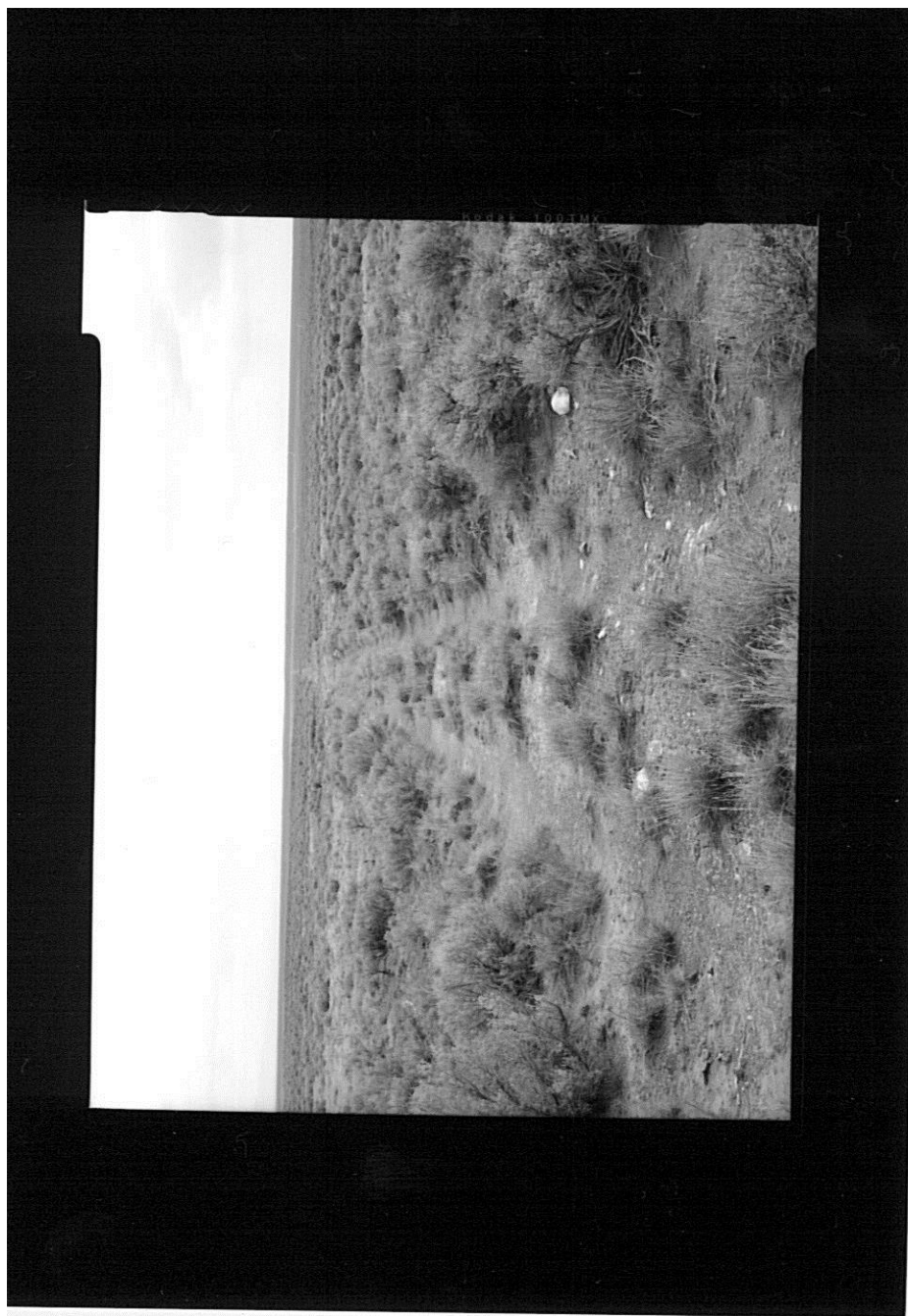
HISTORIC AMERICAN LANDSCAPE SURVEY  
SEE INDEX TO PHOTOGRAPHS FOR CAPTION

HALS No. ID-1-133



HISTORIC AMERICAN LANDSCAPE SURVEY  
SEE INDEX TO PHOTOGRAPHS FOR CAPTION

HALS No. ID-1-134



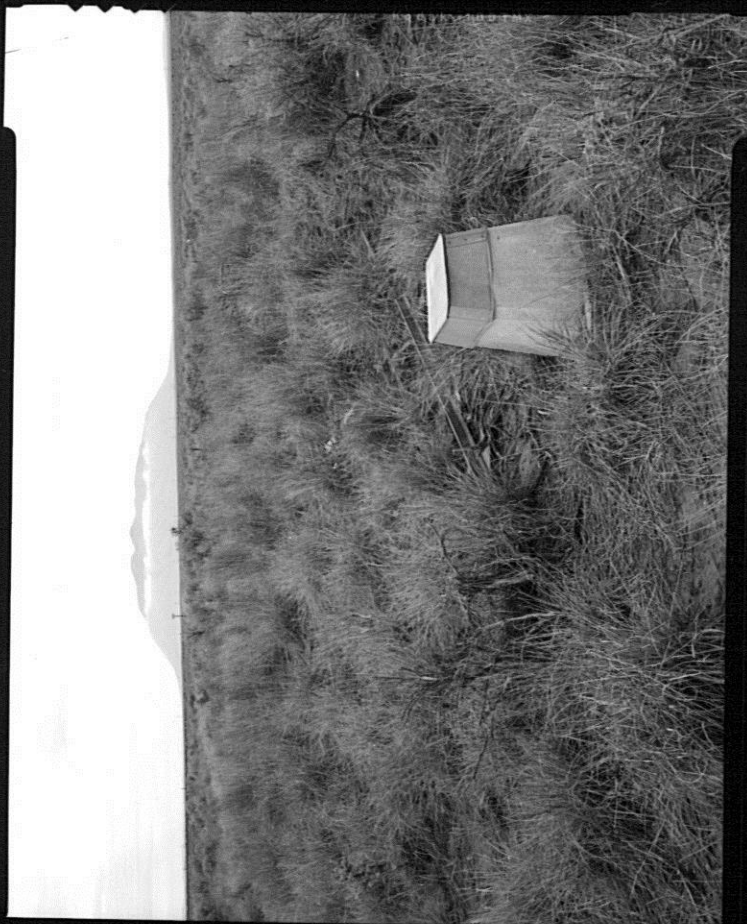
HISTORIC AMERICAN LANDSCAPE SURVEY  
SEE INDEX TO PHOTOGRAPHS FOR CAPTION

HALS No. ID-1-135



HISTORIC AMERICAN LANDSCAPE SURVEY  
SEE INDEX TO PHOTOGRAPHS FOR CAPTION

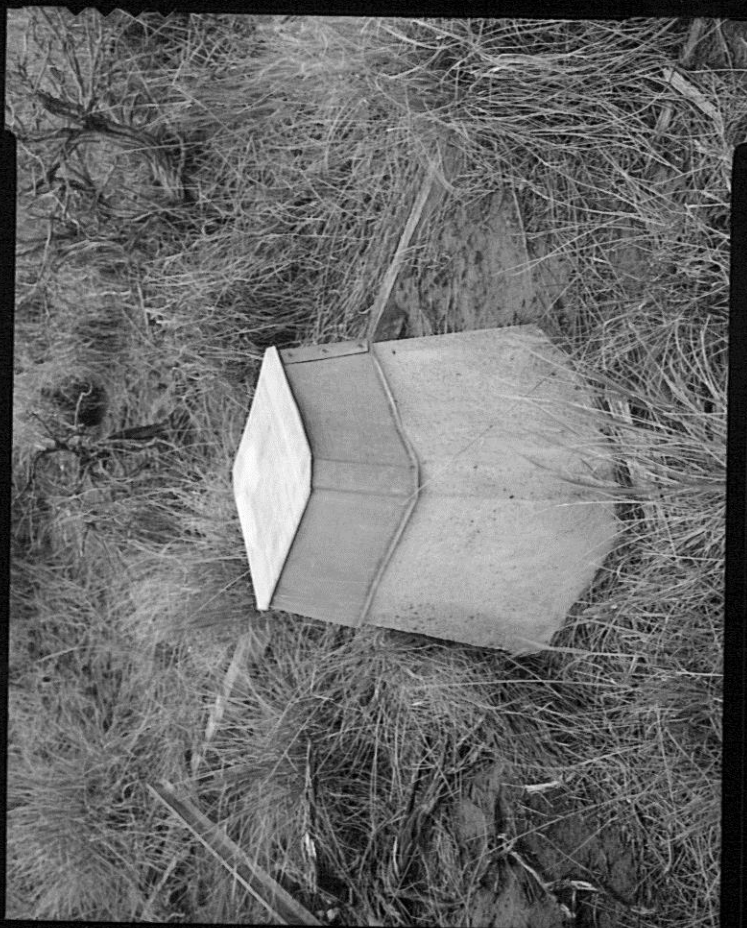
HALS No. ID-1-136





HISTORIC AMERICAN LANDSCAPE SURVEY  
SEE INDEX TO PHOTOGRAPHS FOR CAPTION

HALS No. ID-1-137





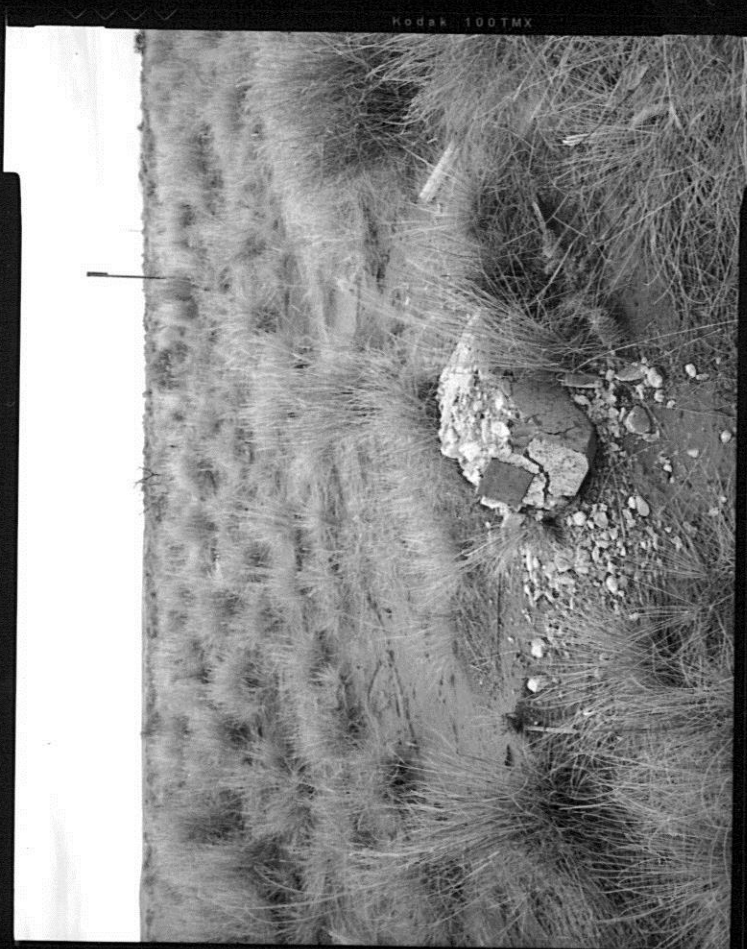
HISTORIC AMERICAN LANDSCAPE SURVEY  
SEE INDEX TO PHOTOGRAPHS FOR CAPTION

HALS No. ID-1-138



HISTORIC AMERICAN LANDSCAPE SURVEY  
SEE INDEX TO PHOTOGRAPHS FOR CAPTION

HALS No. ID-1-139



HISTORIC AMERICAN LANDSCAPE SURVEY  
SEE INDEX TO PHOTOGRAPHS FOR CAPTION

HALS No. ID-1-140



HISTORIC AMERICAN LANDSCAPE SURVEY  
SEE INDEX TO PHOTOGRAPHS FOR CAPTION

HALS No. ID-1-141



HISTORIC AMERICAN LANDSCAPE SURVEY  
SEE INDEX TO PHOTOGRAPHS FOR CAPTION

HALS No. ID-1-142





HISTORIC AMERICAN LANDSCAPE SURVEY  
SEE INDEX TO PHOTOGRAPHS FOR CAPTION

HALS No. ID-1-143





HISTORIC AMERICAN LANDSCAPE SURVEY  
SEE INDEX TO PHOTOGRAPHS FOR CAPTION

HALS No. ID-1-144



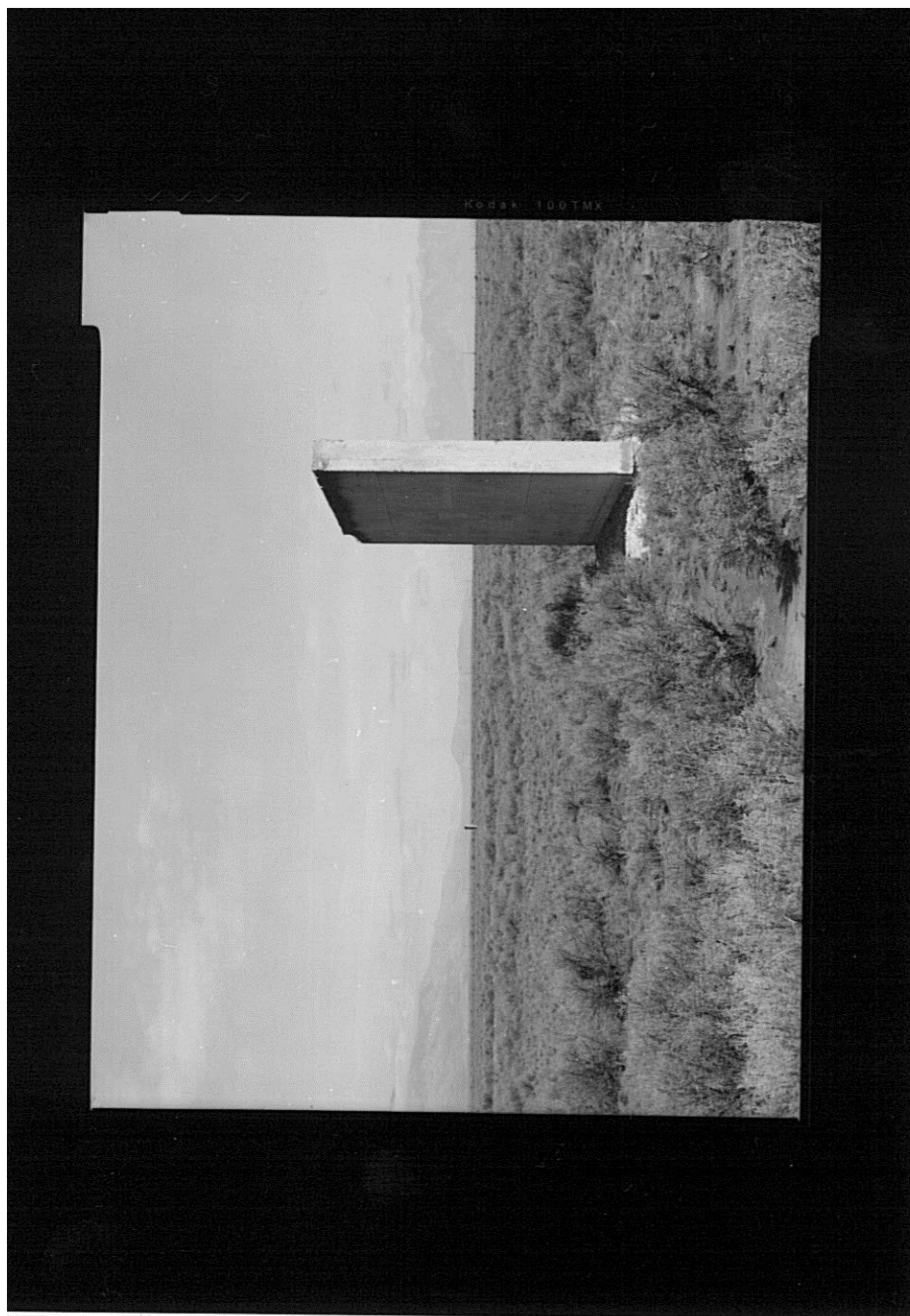
HISTORIC AMERICAN LANDSCAPE SURVEY  
SEE INDEX TO PHOTOGRAPHS FOR CAPTION

HALS No. ID-1-145



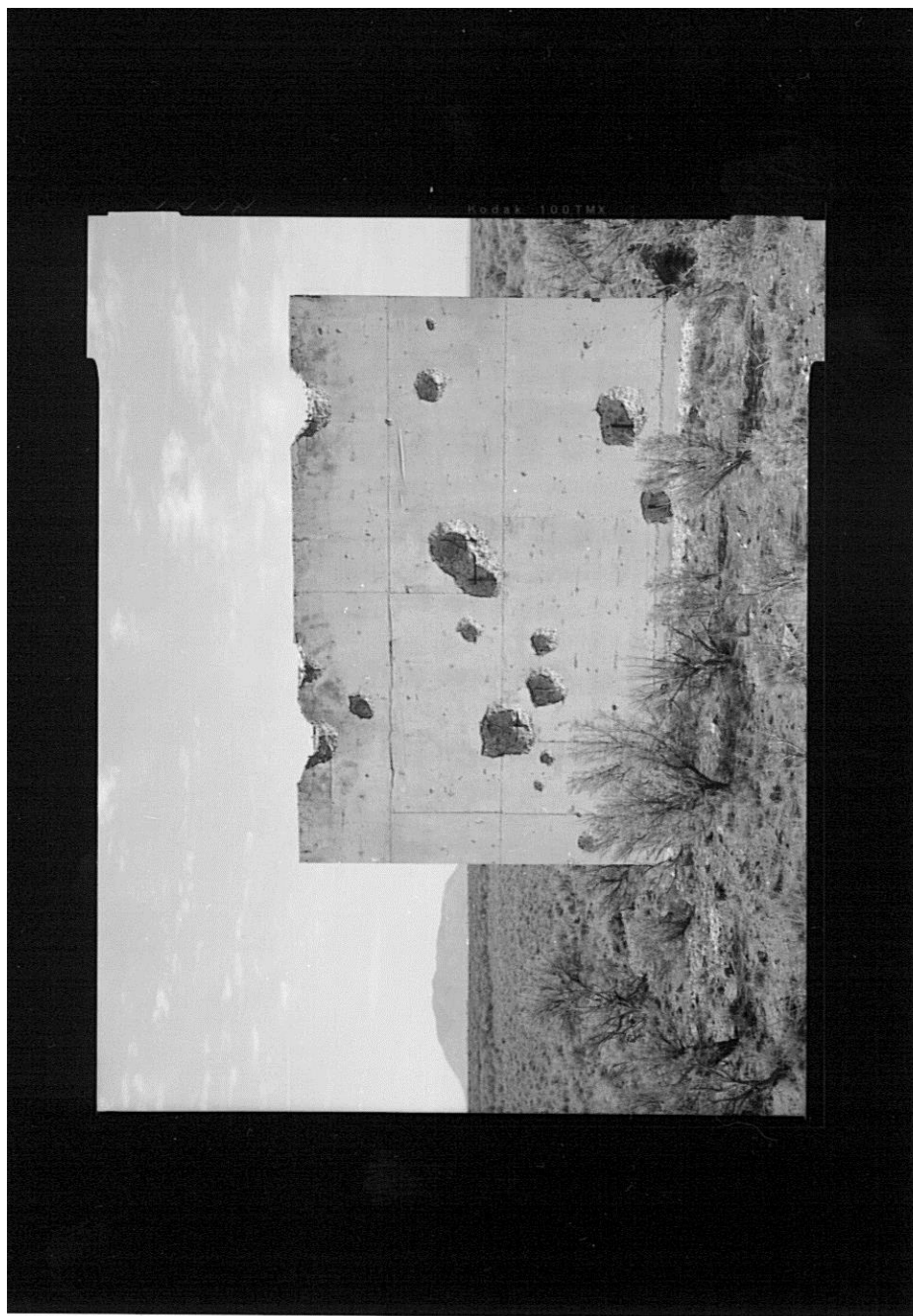
HISTORIC AMERICAN LANDSCAPE SURVEY  
SEE INDEX TO PHOTOGRAPHS FOR CAPTION

HALS No. ID-1-146



HISTORIC AMERICAN LANDSCAPE SURVEY  
SEE INDEX TO PHOTOGRAPHS FOR CAPTION

HALS No. ID-1-147



HISTORIC AMERICAN LANDSCAPE SURVEY  
SEE INDEX TO PHOTOGRAPHS FOR CAPTION

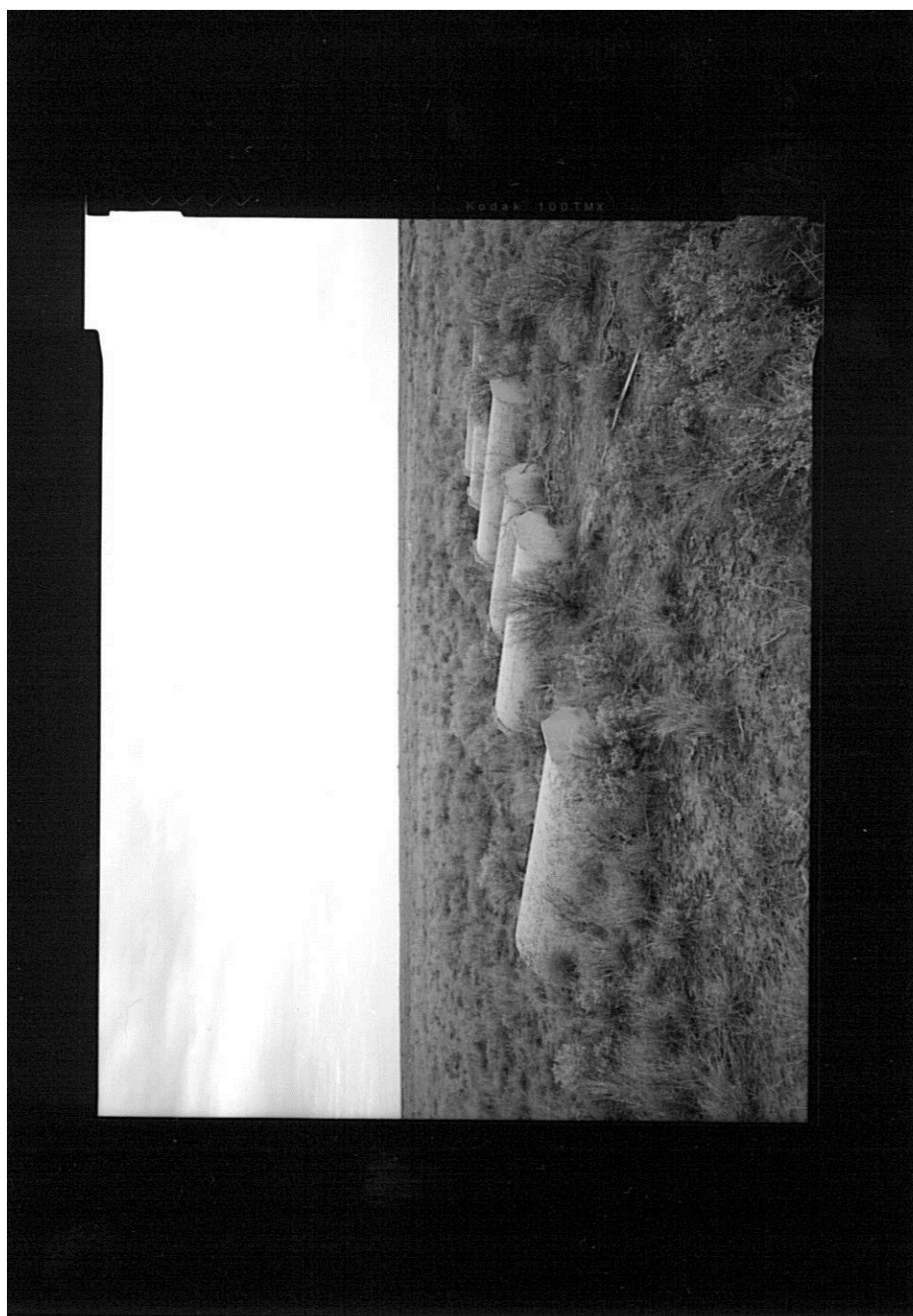
HALS No. ID-1-148





HISTORIC AMERICAN LANDSCAPE SURVEY  
SEE INDEX TO PHOTOGRAPHS FOR CAPTION

HALS No. ID-1-149





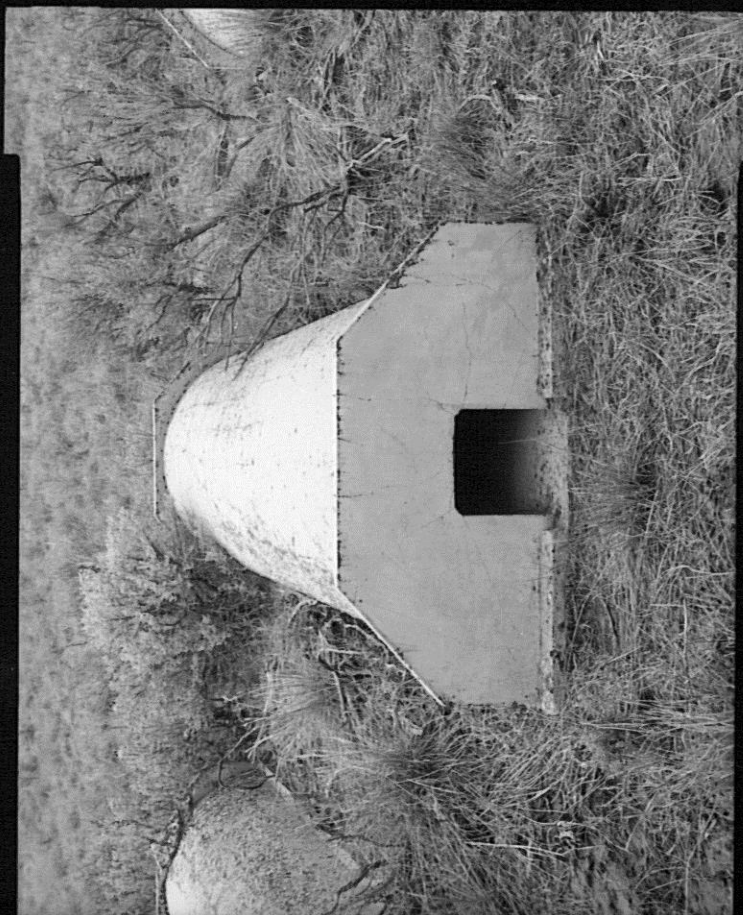
HISTORIC AMERICAN LANDSCAPE SURVEY  
SEE INDEX TO PHOTOGRAPHS FOR CAPTION

HALS No. ID-1-150



HISTORIC AMERICAN LANDSCAPE SURVEY  
SEE INDEX TO PHOTOGRAPHS FOR CAPTION

HALS No. ID-1-151



HISTORIC AMERICAN LANDSCAPE SURVEY  
SEE INDEX TO PHOTOGRAPHS FOR CAPTION

HALS No. ID-1-152



HISTORIC AMERICAN LANDSCAPE SURVEY  
SEE INDEX TO PHOTOGRAPHS FOR CAPTION

HALS No. ID-1-153



HISTORIC AMERICAN LANDSCAPE SURVEY  
SEE INDEX TO PHOTOGRAPHS FOR CAPTION

HALS No. ID-1-154



HISTORIC AMERICAN LANDSCAPE SURVEY  
SEE INDEX TO PHOTOGRAPHS FOR CAPTION

HALS No. ID-1-155





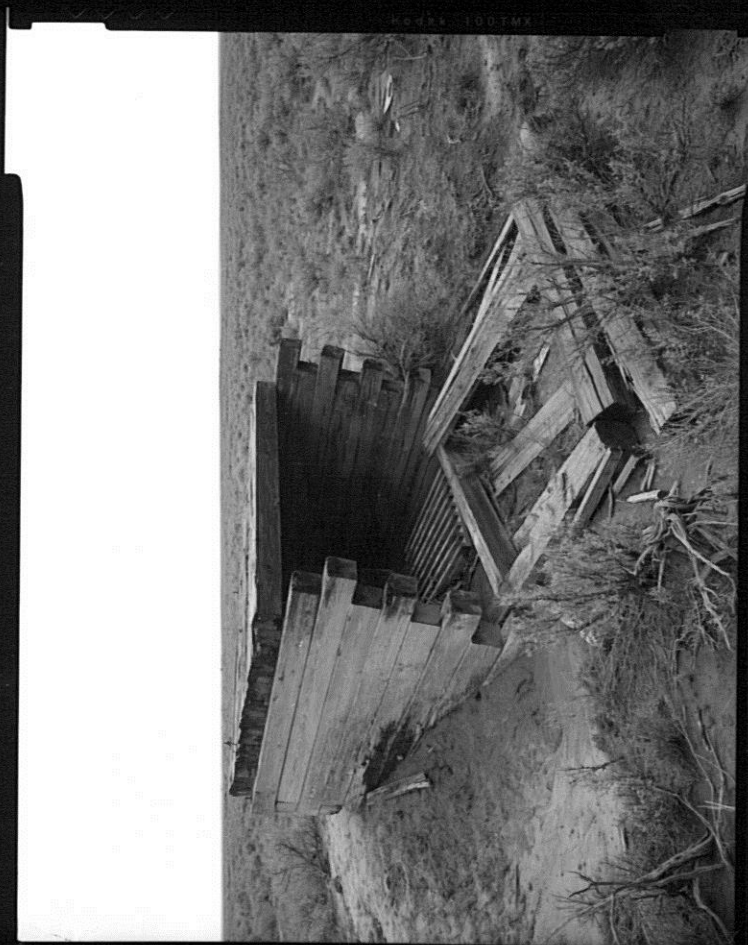
HISTORIC AMERICAN LANDSCAPE SURVEY  
SEE INDEX TO PHOTOGRAPHS FOR CAPTION

HALS No. ID-1-156



HISTORIC AMERICAN LANDSCAPE SURVEY  
SEE INDEX TO PHOTOGRAPHS FOR CAPTION

HALS No. ID-1-157



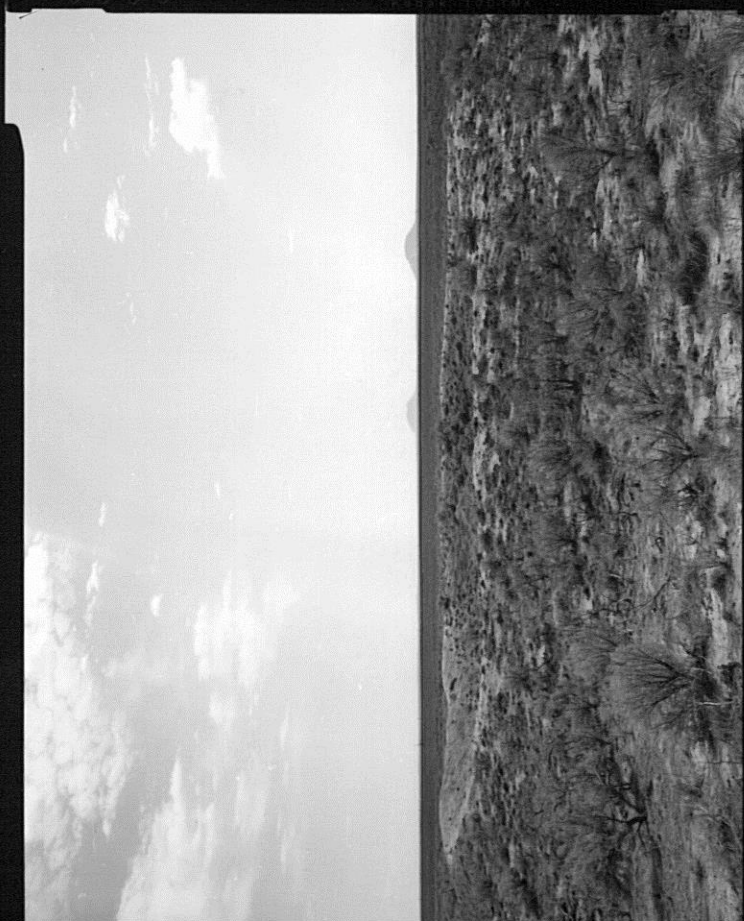
HISTORIC AMERICAN LANDSCAPE SURVEY  
SEE INDEX TO PHOTOGRAPHS FOR CAPTION

HALS No. ID-1-158



HISTORIC AMERICAN LANDSCAPE SURVEY  
SEE INDEX TO PHOTOGRAPHS FOR CAPTION

HALS No. ID-1-159



HISTORIC AMERICAN LANDSCAPE SURVEY  
SEE INDEX TO PHOTOGRAPHS FOR CAPTION

HALS No. ID-1-160





HISTORIC AMERICAN LANDSCAPE SURVEY  
SEE INDEX TO PHOTOGRAPHS FOR CAPTION

HALS No. ID-1-161





HISTORIC AMERICAN LANDSCAPE SURVEY  
SEE INDEX TO PHOTOGRAPHS FOR CAPTION

HALS No. ID-1-162



HISTORIC AMERICAN LANDSCAPE SURVEY  
SEE INDEX TO PHOTOGRAPHS FOR CAPTION

HALS No. ID-1-163

